



Uni-Flange® 1300 & 1390

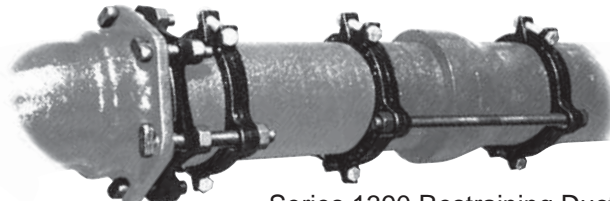
Product Release

04/2006

Uni-Flange® Series 1300 and 1390 For Use On Ductile Iron Pipe

The Series 1300 and 1390 offer full circumferential contact and support of the pipe wall. This is recommended by many pipe manufacturers and is especially important when thinner walled pipes are used, such as AWWA C-151, Class 50 or the "Pressure Class" Ductile Iron Pipe. There are no set screws or wedges that may distort / point load the pipe or damage the cement mortar lining. (In fact, the Series 1300/1390 combination is very similar to certain "factory restrained joint pipe" with easier installation, faster availability, and a lower overall cost.)

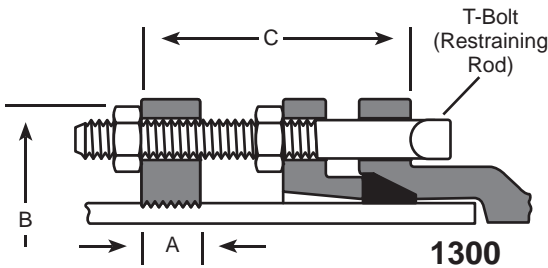
Series 1300 Restraining Ductile Iron Pipe and MJ Fittings



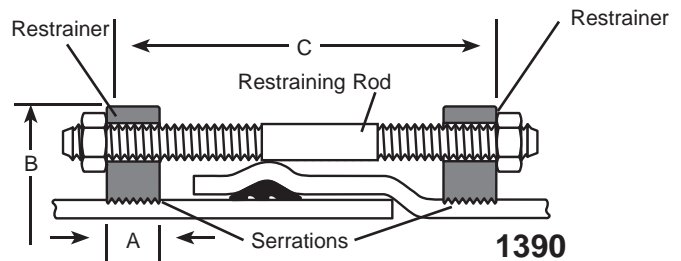
Series 1390 Restraining Ductile Iron Pipe Joint (bell and spigot)



Series 1300 Restrained End Cap



1300



1390

NOM. PIPE SIZE	DUCTILE IRON PIPE STYLE 1300-C		A	B APPROX.	C MAX.	RESTRAINT BOLTS / RODS		CLAMPING BOLTS		APPROX. WT. LBS.	*PRESSURE RATING (PSI)	CLAMPING BOLT TORQUE
	O.D.	CATALOG NUMBER				No.	SIZE	No.	SIZE			
4"	4.80	UFR1300-C-4	1-1/8"	9-1/8"	6"	2	3/4"x7"	2	5/8"x3-1/2"	8.5	250	100 ft-lb.
6"	6.90	UFR1300-C-6	1-1/8"	11-1/8"	6"	2	3/4"x7"	2	5/8"x3-1/2"	10.0		150 ft-lb.
8"	9.05	UFR1300-C-8	1-1/4"	14-5/8"	6"	2	3/4"x7"	2	3/4"x4"	15.5		200 ft-lb.
10"	11.10	UFR1300-C-10	1-3/8"	16-5/8"	6"	4	3/4"x7"	2	7/8"x5"	26.5	200	200 ft-lb.
12"	13.20	UFR1300-C-12	1-3/8"	19-1/4"	6"	4	3/4"x7"	2	7/8"x5"	28.5		
14"	15.30	UFR1300-C-14	4"	22-1/2"	15"	6	3/4"x17"	4	7/8"x7"	72.5		
16"	17.40	UFR1300-C-16	4"	24-9/16"	15"	6	3/4"x17"	4	7/8"x7"	77.0		

NOM. PIPE SIZE	DUCTILE IRON PIPE STYLE 1390-C		A	B APPROX.	C MAX.	RESTRAINT BOLTS / RODS		CLAMPING BOLTS		APPROX. WT. LBS.	*PRESSURE RATING (PSI)	CLAMPING BOLT TORQUE
	O.D.	CATALOG NUMBER				No.	SIZE	No.	SIZE			
4"	4.80	UFR1390-C-4	1-1/8"	9-1/8"	12"	2	3/4"x17"	4	5/8"x3-1/2"	17.0	250	100 ft-lb.
6"	6.90	UFR1390-C-6	1-1/8"	11-1/8"	13"	2	3/4"x17"	4	5/8"x3-1/2"	18.5		150 ft-lb.
8"	9.05	UFR1390-C-8	1-1/4"	14-5/8"	15"	2	3/4"x17"	4	3/4"x4"	29.0		200 ft-lb.
10"	11.10	UFR1390-C-10	1-3/8"	16-5/8"	16"	4	3/4"x24"	4	7/8"x5"	53.0	200	200 ft-lb.
12"	13.20	UFR1390-C-12	1-3/8"	19-1/4"	18"	4	3/4"x24"	4	7/8"x5"	56.5		
14"	15.30	UFR1390-C-14	4"	22-1/2"	24"	6	3/4"x30"	8	7/8"x7"	136.0		
16"	17.40	UFR1390-C-16	4"	24-9/16"	28"	6	3/4"x30"	8	7/8"x7"	147.0		

Note: Not recommended for use on machined end pipe or fittings.

* For higher pressure requirements or larger size bell and spigot restraint, see Series 1450 in Ford Catalog Section U.

See the table above for installation torque requirements and pressure qualifications. All dimensions in inches unless otherwise stated.

Note: 14" and 16" are non-returnable and may be subject to a cancellation fee.