

## FTSAS, FTS AND FTSC WITH MECHANICAL JOINT OUTLET

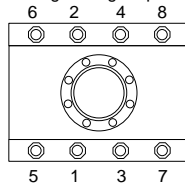
### INSTALLATION INSTRUCTIONS

1. Clean all pipe surfaces thoroughly.
2. Lubricate pipe and gasket with a thin coating of pipe joint lubricant. **Note:** Extra attention must be given to the lubrication of AC pipe due to its rough and absorbent nature.
3. Assemble the tapping sleeve on the pipe.
4. Install bolts and tighten nuts as follows:



**5/8" nuts - 50-60 ft. lb. / 3/4" nuts - 90-100 ft. lb.**

Bolt tightening sequence



5. Make sure the flange face on the tapping sleeve and the contact area on the MJ valve are clean and free of dirt or debris. Inspect the face of the MJ valve for a smooth, even surface to ensure it will provide proper alignment with the tapping sleeve.
6. Apply a soap-based pipe lubricant to the exposed connecting gasket.
7. Place the open cavity of the valve onto the MJ outlet of the tapping sleeve and align the bolt holes. Note that it may be necessary to insert some of the fasteners into certain valves prior to making the connection. Apply blocks and shims to support the valve's suspended weight.
8. Evenly and alternately tighten the outlet fasteners with the appropriate wrench to maintain an even spacing as the components are drawn together. Continue to tighten the fasteners until the tapping sleeve flange and the MJ valve face make solid contact around the outlet. The flange is designed to come face-to-face with the valve.
9. Test valve and sleeve assembly using the tapping sleeve test port. AWWA C223 recommends "...the installer hydrostatically [water] test the seal between the gasket and pipe. For personal safety reasons, do not use a compressible fluid medium (such as air) to check for water tightness." If a leak is observed, relieve the pressure and re-tighten the bolts to the recommended torque. If the leak continues, remove the tapping sleeve, re-clean the pipe and repeat the necessary installation steps.
10. Attach the drilling machine to the valve, block and shim to support the machine's weight, and check for proper mating and alignment.
11. **Make the following checks before proceeding with the tap.**
  - a. Gaps between the tapping sleeve saddle and the band sections are equal from side to side and from end to end.
  - b. All bolts are tightened to the proper torque.
  - c. All blocking is in place and secure.
  - d. Tapping sleeve, valve and tapping machine are properly aligned.
  - e. Correct cutter size has been selected for the job. (FTSAS, FTS and FTSC tapping sleeves allow a full size cutter in outlet sizes 4" -12". **Outlets larger than 12" require a 1" undersized cutter.**)
12. For best results, recheck tapping sleeve bolt torque after the tap is made and before backfilling.
13. To prevent undue stress on the tapping sleeve and valve assembly, make sure the new water main will rest on a well compacted bed with its center line matching the center line of the valve.

FORM# 91848-99

11/07



The Ford Meter Box Co., Inc. 775 Manchester Avenue, P.O. Box 443, Wabash, Indiana, USA 46992-0443  
Telephone: 260-563-3171 FAX: 800-826-3487 Overseas FAX: 260-563-0167 <http://www.fordmeterbox.com>