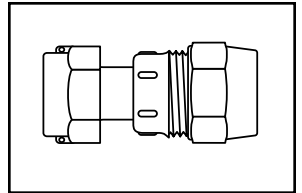
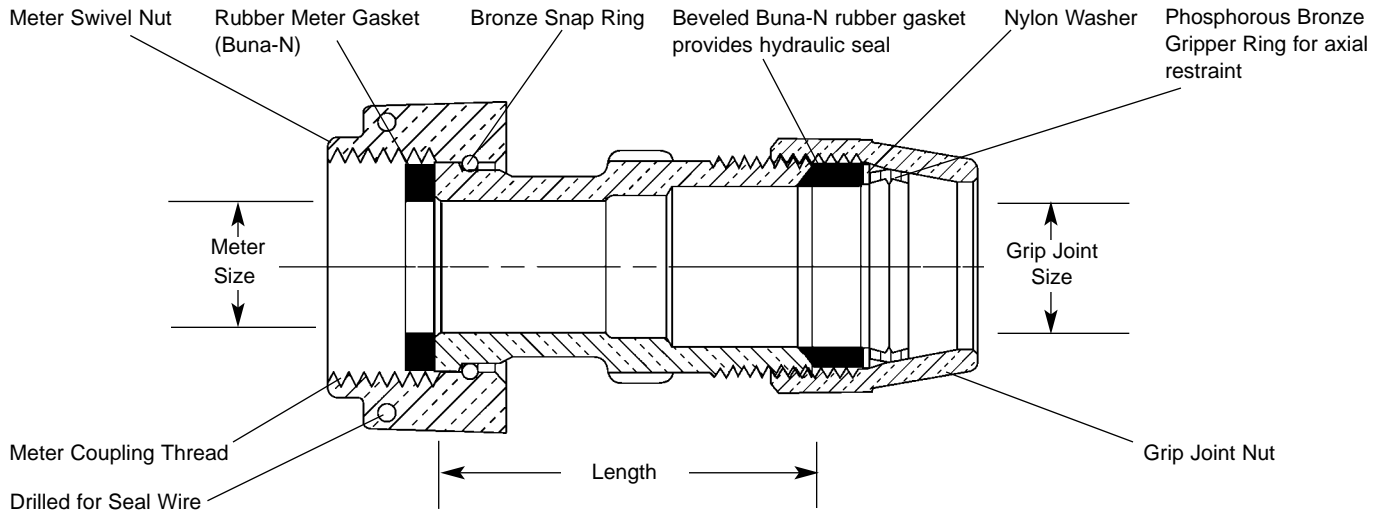


# SUBMITTAL INFORMATION

## Straight Meter Coupling - (C36-xx-G style)



### METER SWIVEL NUT BY GRIP JOINT FOR POLYETHYLENE (PEP) PIPE



METER SIZE	GRIP JOINT SIZE	LENGTH	APPROX. Wt. LBS	PART NUMBER	✓ SUBMITTED ITEM(S)
5/8"	3/4"	2"	.9	C36-13-G	
5/8"x3/4" AND 3/4"	3/4"	2"	.9	C36-23-G	
1"	1"	2-3/4"	1.8	C36-44-G	

Ford recommends insert stiffeners when using plastic pipe or tubing

### FEATURES

- All brass conforms to AWWA Standard C800 (ASTM B-62, UNS NO C83600 - 85-5-5-5)
- Body design provides wrench lugs to facilitate installation.
- Conforms to AWWA C700 for Meter Threads.

The Ford Meter Box Company considers the information in this submittal form to be correct at the time of publication. Item and option availability, including specifications, are subject to change without notice. Please verify that your product information is current.



#### The Ford Meter Box Company, Inc.

P.O. Box 443, Wabash, Indiana U.S.A. 46992-0443

Phone: 260-563-3171 / Fax: 800-826-3487

Overseas Fax: 260-563-0167

<http://www.fordmeterbox.com>

01/03/02

Submitted By: