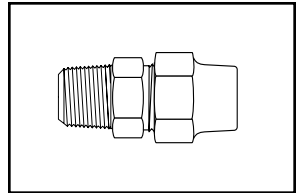
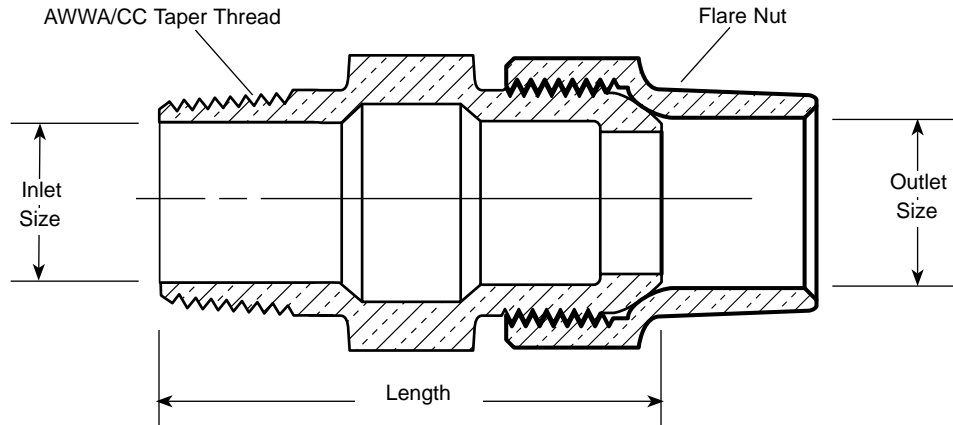


SUBMITTAL INFORMATION

Corporation Stop Replacement Piece - (F60-x style)



AWWA/CC TAPER THREAD INLET BY FLARE COPPER OUTLET



DESCRIPTION		LENGTH	APPROX. WT. LBS	PART NUMBER	✓ SUBMITTED ITEM(S)
INLET SIZE	OUTLET SIZE				
1/2"	1/2"	2-1/8"	.3	F60-1	
3/4"	3/4"	2-5/8"	.6	F60-3	
1"	1"	2-13/16"	1.2	F60-4	
1-1/2"	1-1/2"	4-1/8"	3.1	F60-6	
2"	2"	4-1/2"	6.1	F60-7	

FEATURES

- All brass conforms to AWWA Standard C800 (ASTM B-62 and ASTM B-584, UNS NO C83600 - 85-5-5-5)
- Body design provides hexagonal wrench flats for proper installation.
- Replaces F600 Corporation Stops and FB600 Ballcorps.

The Ford Meter Box Company considers the information in this submittal form to be correct at the time of publication. Item and option availability, including specifications, are subject to change without notice. Please verify that your product information is current.



The Ford Meter Box Company, Inc.

P.O. Box 443, Wabash, Indiana U.S.A. 46992-0443

Phone: 260-563-3171 / Fax: 800-826-3487

Overseas Fax: 260-563-0167

<http://www.fordmeterbox.com>

01/22/04

Submitted By:

Blank space for signature or name.