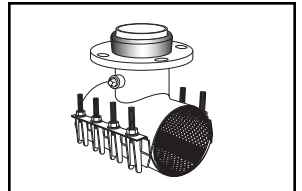


SUBMITTAL INFORMATION

Stainless Steel Tapping Sleeve - (FAST-xxx-x-MJ style)



STAINLESS STEEL TAPPING SLEEVE WITH MECHANICAL JOINT OUTLET

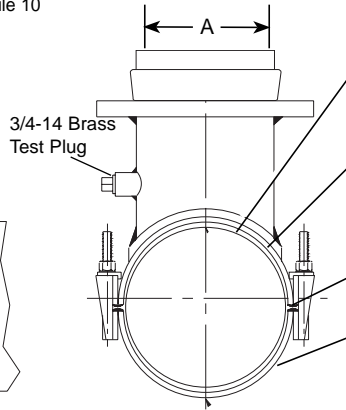
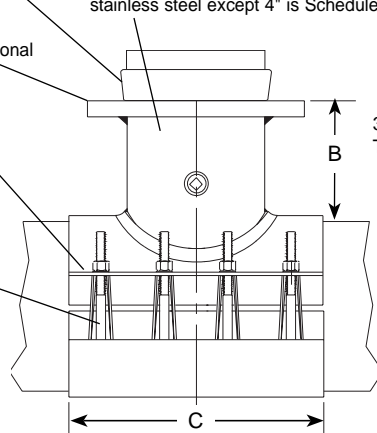
Connecting Gasket is Buna-N per ASTM D2000

Outlet Pipe - Schedule 5, 18-8 type 304 stainless steel except 4" is Schedule 10

Flange - 18-8 stainless steel. Optional carbon steel flange available.

Lifter bar 18-8 type 304 stainless steel provides a heavy bearing surface for nuts.

Studs, nuts, & washers - 18-8 type 304 stainless steel. Nuts and washers are coated to prevent galling.



Outlet Gasket - Buna-N compounded for water service, per ASTM D2000. Outlet gasket assures complete seal of outlet area.

Full Gasket - Gridded Virgin SBR compounded for water service, per ASTM D2000. Full gasket gives 360° pipe coverage.

Armors - Heavy gage 18-8 type 304 stainless steel are vulcanized to gasket to bridge the gap between lugs.

Body & Strap - 18-8 type 304 stainless steel all welds are fully passivated to restore stainless characteristics.

NOM. PIPE SIZE	SLEEVE O.D. RANGE	CATALOG NUMBER**	BY	SS** OUTLET SIZE/CODE	APPROX. WT.	NOMINAL DIMENSIONS - INCHES			SADDLE THICKNESS (GAGE)	STRAP THICKNESS (GAGE)	STUD SIZE	No. STUDS	✓ SUBMITTED ITEM(S)
						A	B	C					
4"	4.50-4.80	FAST-480 -	X	4 -MJ	36	4-1/4	5-3/16	15	.075" (14)		5/8"	8	
	4.80-5.10	FAST-510 -											
	5.05-5.30	FAST-530 -											
6"	6.60-7.00	FAST-700 -	X	4 -MJ	39	4-1/4	5-3/16	15		.048" (18)	5/8"	8	
	6.90-7.30	FAST-730 -		6 -MJ	43	6-3/8	5-1/2						
	7.10-7.50	FAST-750 -											
8"	8.63-9.05	FAST-905 -	X	4 -MJ	43	4-1/4	5-3/16	15			5/8"	8	
	9.05-9.45	FAST-945 -		6 -MJ	47	6-3/8	5-1/2	15					
	9.30-9.70	FAST-970 -		8 -MJ	64	8-15/16	5-5/8	20					
10"	10.75-11.15	FAST-1115 -	X	4 -MJ	46	4-1/4	5-3/16	15			5/8"	8	
	11.05-11.45	FAST-1145 -		6 -MJ	50	6-3/8	5-1/2	15					
	11.75-12.15	FAST-1215 -		8 -MJ	68	8-5/16	5-5/8	20					
12"	12.75-13.20	FAST-1320 -	X	4 -MJ	49	4-1/4	5-3/16	15			5/8"	8	
	13.10-13.50	FAST-1350 -		6 -MJ	53	6-3/8	5-1/2	15					
	14.00-14.40	FAST-1440 -		8 -MJ	72	8-5/16	5-5/8	20					
14"	15.30-15.70	FAST-1570 -	X	4 -MJ	70	4-1/4	5-3/16	15			3/4"	8	
	15.80-16.20	FAST-1620 -		6 -MJ	74	6-3/8	5-1/2	15					
	16.48-16.88	FAST-1688 -		8 -MJ	93	8-5/16	5-5/8	20					
				10 -MJ	98	10-1/4	6-1/8	20				12	
				12 -MJ	132	12-1/4	6-1/4	24				14	

** To order: Add flanged outlet size to catalog number. Example: The complete FAST catalog number for an 8" pipe (9.05 O.D.) with a 6" stainless steel flange is FAST-945-6-MJ. For a carbon steel flange, add "A" to the catalog number. Example: FAST-945-6A-MJ

FEATURES

- Body, straps and UNC threaded studs are made of 18-8 type 304 stainless steel. Flange can be either 18-8 type 304 stainless steel or ASTM A36 carbon steel.
- All welds are fully passivated for corrosion resistance.
- Outlet gaskets are Buna-N rubber per ASTM D2000.

The Ford Meter Box Company considers the information in this submittal form to be correct at the time of publication. Item and option availability, including specifications, are subject to change without notice. Please verify that your product information is current.



The Ford Meter Box Company, Inc.
 P.O. Box 443, Wabash, Indiana U.S.A. 46992-0443
 Phone: 260-563-3171 / Fax: 800-826-3487
 Overseas Fax: 260-563-0167
<http://www.fordmeterbox.com>

02/03/05

Submitted By: