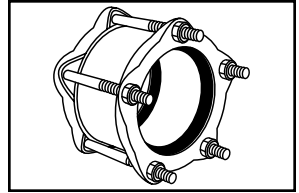
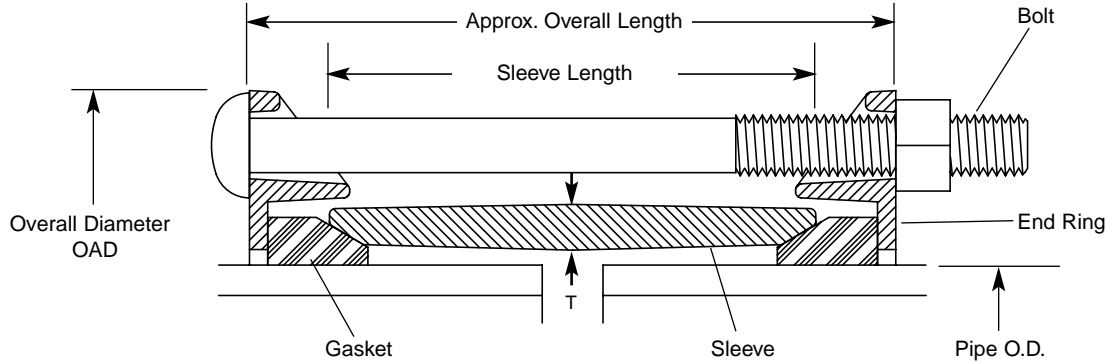


# SUBMITTAL INFORMATION

## Ductile Iron Transition Coupling - (FC2A-xxx-xxx-ESH style)



### 2" & 3" STYLE FC2A COUPLINGS FOR JOINING PIPES WITH DIFFERENT O.D.'S



NOM. PIPE SIZE	GASKET RANGE 1ST HALF CAT. #	END RING COLOR	BY	GASKET RANGE 2ND HALF CAT. #	END RING COLOR	CENTER SLEEVE		BOLTS		APPROX. OVERALL LGTH.	OAD	APPROX. WT. LBS.	CATALOG NUMBER	✓ SUBMITTED ITEM(S)
						LGTH.	APPROX. (T) THICKNESS	DIA.	LGTH.					
2"	2.30 - 2.45	Blk	X	2.30 - 2.45	Blk	4"	5/16"	5/8"	6-1/2"	2	5-1/8"	6-1/8"	12	FC2A-245-245-ESH
	2.30 - 2.45	Blk		2.40 - 2.65	Blk									FC2A-245-265-ESH
	2.30 - 2.45	Blk		2.65 - 2.88	Blk									FC2A-245-288-ESH
	2.40 - 2.65	Blk		2.40 - 2.65	Blk									FC2A-265-265-ESH
	2.40 - 2.65	Blk		2.65 - 2.88	Blk									FC2A-265-288-ESH
	2.65 - 2.88	Blk		2.65 - 2.88	Blk									FC2A-288-288-ESH
3"	3.13	Red	X	3.13	Red	4"	3/8"	5/8"	6-1/2"	3	5-1/8"	6-15/16"	18	FC2A-313-313-ESH
	3.13	Red		3.45 - 3.60	Red									FC2A-313-360-ESH
	3.45 - 3.60	Red		3.45 - 7.60	Red									FC2A-360-360-ESH
	3.45 - 3.60	Red		3.70 - 3.88	Blk									FC2A-360-388-ESH
	3.45 - 3.60	Red		3.91 - 4.06	Blk									FC2A-360-406-ESH
	3.45 - 3.60	Red		4.07 - 4.20	Wht/Gry									FC2A-360-420-ESH
	3.70 - 3.88	Blk		3.70 - 3.88	Blk									FC2A-388-388-ESH
	3.70 - 3.88	Blk		3.91 - 4.06	Blk									FC2A-388-406-ESH
	3.70 - 3.88	Blk		4.07 - 4.20	Wht/Gry									FC2A-388-420-ESH
	3.91 - 4.06	Blk		3.91 - 4.06	Blk									FC2A-406-406-ESH
	3.91 - 4.06	Blk		4.07 - 4.20	Wht/Gry									FC2A-406-420-ESH
	4.07 - 4.20	Wht/Gry		4.07 - 4.20	Wht/Gry									FC2A-420-420-ESH

**Note:** Flexible Couplings do not restrain axial forces on piping.

### FEATURES

- Center Sleeve: Ductile Iron per ASTM A536 (65-45-12)
- End Rings: Ductile Iron per ASTM A536 (65-45-12)
- Bolts and Nuts: 304 Stainless Steel per ASTM A193 and A194
- Coating: Fusion-bonded Epoxy. Applied per AWWA C213
- NSF61: NSF 61 Approved
- Gasket: Molded SBR Rubber per ASTM D2000, M4AA810

The Ford Meter Box Company considers the information in this submittal form to be correct at the time of publication. Item and option availability, including specifications, are subject to change without notice. Please verify that your product information is current.



### The Ford Meter Box Company, Inc.

P.O. Box 443, Wabash, Indiana U.S.A. 46992-0443

Phone: 260-563-3171 / Fax: 800-826-3487

Overseas Fax: 260-563-0167

<http://www.fordmeterbox.com>

1/16/02

Submitted By: