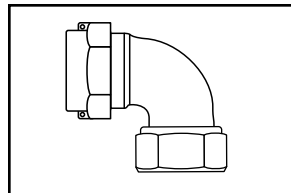
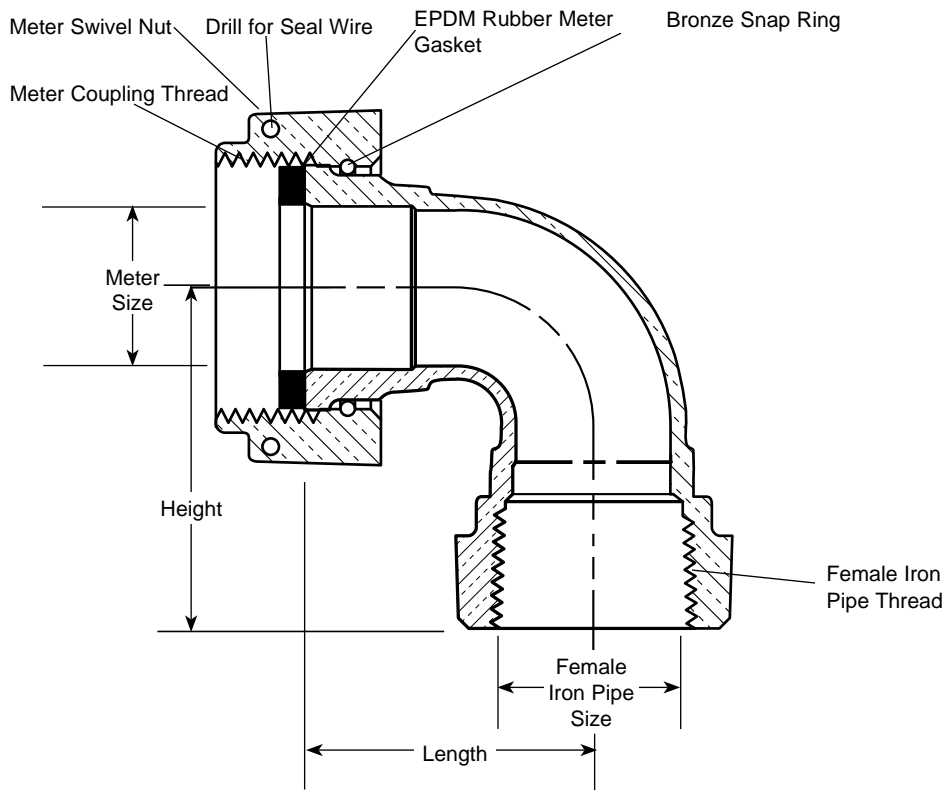


SUBMITTAL INFORMATION

Angle Meter Coupling - (L31-xx style)



METER SWIVEL NUT BY FEMALE IRON PIPE THREAD



DESCRIPTION		LENGTH	HEIGHT	APPROX. WT. LBS	PART NUMBER	✓ SUBMITTED ITEM(S)
METER SIZE	FIP SIZE					
5/8"	3/4"	1-9/16"	1-11/16"	.8	▼ L31-13	
5/8"x3/4" & 3/4"	3/4"	1-9/16"	1-5/8"	.9	▼ L31-23	
5/8"x3/4" & 3/4"	3/4"	1-9/16"	1-5/8"	1.0	▼ *L31-23D	
5/8"x3/4" & 3/4"	1"	1-9/16"	2"	1.0	▼ L31-24	
1"	1"	1-15/16"	1-7/8"	1.2	▼ L31-44	

▼ UL Classified to ANSI/NSF Standard 61.

* D = Test / Drain Valve on side of body



FEATURES

- All brass conforms to AWWA Standard C800 (ASTM B-62 and ASTM B-584, UNS NO C83600 - 85-5-5-5)
- Conforms to AWWA C700 for Meter Threads.
- Body design provides wrench flats to facilitate installation.

The Ford Meter Box Company considers the information in this submittal form to be correct at the time of publication. Item and option availability, including specifications, are subject to change without notice. Please verify that your product information is current.



The Ford Meter Box Company, Inc.

P.O. Box 443, Wabash, Indiana U.S.A. 46992-0443

Phone: 260-563-3171 / Fax: 800-826-3487

Overseas Fax: 260-563-0167

<http://www.fordmeterbox.com>

07/07/04

Submitted By: