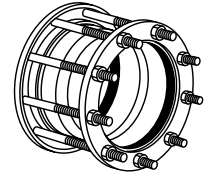
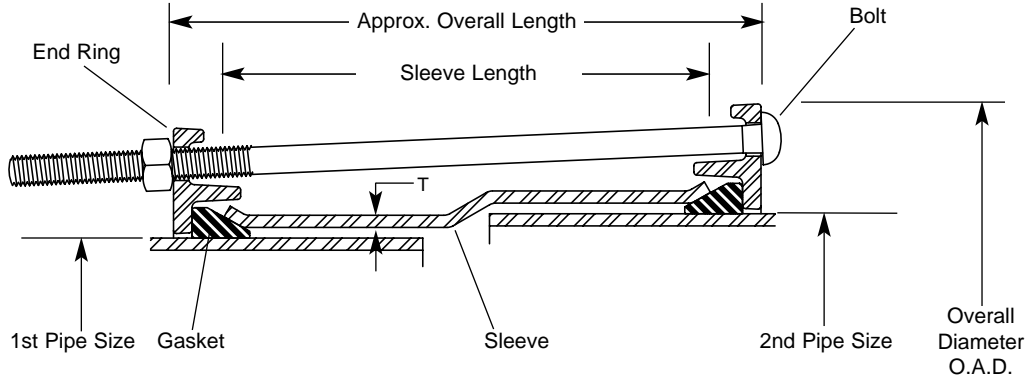


SUBMITTAL INFORMATION

Fabricated Steel Transition Coupling - (FC5-xxxx-xxxx-AxxR style)



STYLE FC5 COUPLINGS FOR JOINING PIPES WITH DIFFERENT O.D.'S



NOM. PIPE SIZE	1ST END PIPE O.D.	BY	2ND END PIPE O.D.	CENTER SLEEVE		BOLTS			APPROX. OVERALL LGTH.	OAD	APPROX. WT. LBS.	RATED WORKING PRESSURE	CATALOG NUMBER	✓ SUBMITTED ITEM(S)
				(T) THICKNESS	LGTH.	DIA.	LGTH.	QTY.						
14"	14.00	X	15.30	1/4"	10"	5/8"	13-1/2"	9	11-1/8"	19-11/16"	85	200	FC5-1400-1530-A10R	
	15.30		15.65							20-1/4"	91	416	FC5-1530-1565-A10R	
	15.30		15.98							20-5/8"	96	416	FC5-1530-1598-A10R	
	15.30		16.22							20-7/8"	97	410	FC5-1530-1622-A10R	
16"	16.00	X	17.40	1/4"	10"	5/8"	13-1/2"	10	11-1/8"	22"	96	200	FC5-1600-1740-A10R	
	17.40		17.80							22-7/16"	102	372	FC5-1740-1780-A10R	
	17.40		17.94							22-9/16"	107	372	FC5-1740-1794-A10R	
	17.40		18.16							22-13/16"	107	372	FC5-1740-1816-A10R	
18"	18.00	X	19.50	1/4"	10"	5/8"	13-1/2"	11	11-1/8"	24-1/8"	107	200	FC5-1800-1950-A10R	
	19.50		19.92							24-9/16"	114	337	FC5-1950-1992-A10R	
20"	20.00	X	21.60	1/4"	10"	5/8"	13-1/2"	12	11-1/8"	25-1/4"	116	200	FC5-2000-2160-A10R	
	21.60		22.06							26-11/16"	124	313	FC5-2160-2206-A10R	
	21.60		22.50							27-1/8"	124	313	FC5-2160-2250-A10R	
24"	24.00	X	25.80	1/4"	10"	5/8"	13-1/2"	14	11-1/8"	30-7/16"	137	200	FC5-2400-2580-A10R	
	25.80		26.32							30-15/16"	146	250	FC5-2580-2632-A10R	
	25.80		26.48							31-1/8"	146	250	FC5-2580-2648-A10R	
30"	30.00	X	32.00	1/4"	10"	5/8"	13-1/2"	16	11-1/8"	36-5/8"	157	200	FC5-3000-3200-A10R	
	31.74		32.00							36-5/8"	165	230	FC5-3174-3200-A10R	
	32.00		32.40							37"	166	230	FC5-3200-3240-A10R	
	32.00		32.74							37-3/8"	166	230	FC5-3200-3274-A10R	
36"	36.00	X	38.30	1/4"	10"	5/8"	13-1/2"	18	11-1/8"	42-11/16"	186	193	FC5-3600-3830-A10R	
	37.96		38.30							42-11/16"	225	193	FC5-3796-3830-A10R	
	38.30		38.70							43-13/16"	230	193	FC5-3830-3870-A10R	
	38.30		39.16							44-15/16"	230	193	FC5-3830-3916-A10R	

Note: Flexible Couplings do not restrain axial forces on piping.

FEATURES

- Center Sleeve: Carbon Steel per ASTM A36
- End Rings: Cold Rolled Carbon Steel per AISI 1020
- Bolts and Nuts: High strength low alloy steel per ASTM A242 or AWWA C111
- Coating: Black Alkyd Enamel Shop Coat NSF61 Approved
- Gasket: Extruded SBR Rubber per ASTM D2000 M4AA810 with heat bonded joint

The Ford Meter Box Company considers the information in this submittal form to be correct at the time of publication. Item and option availability, including specifications, are subject to change without notice. Please verify that your product information is current.



The Ford Meter Box Company, Inc.

P.O. Box 443, Wabash, Indiana U.S.A. 46992-0443

Phone: 260-563-3171 / Fax: 800-826-3487

Overseas Fax: 260-563-0167

<http://www.fordmeterbox.com>

05/29/01

Submitted By: