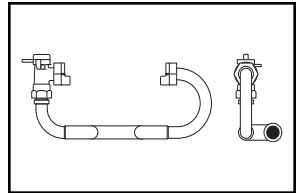
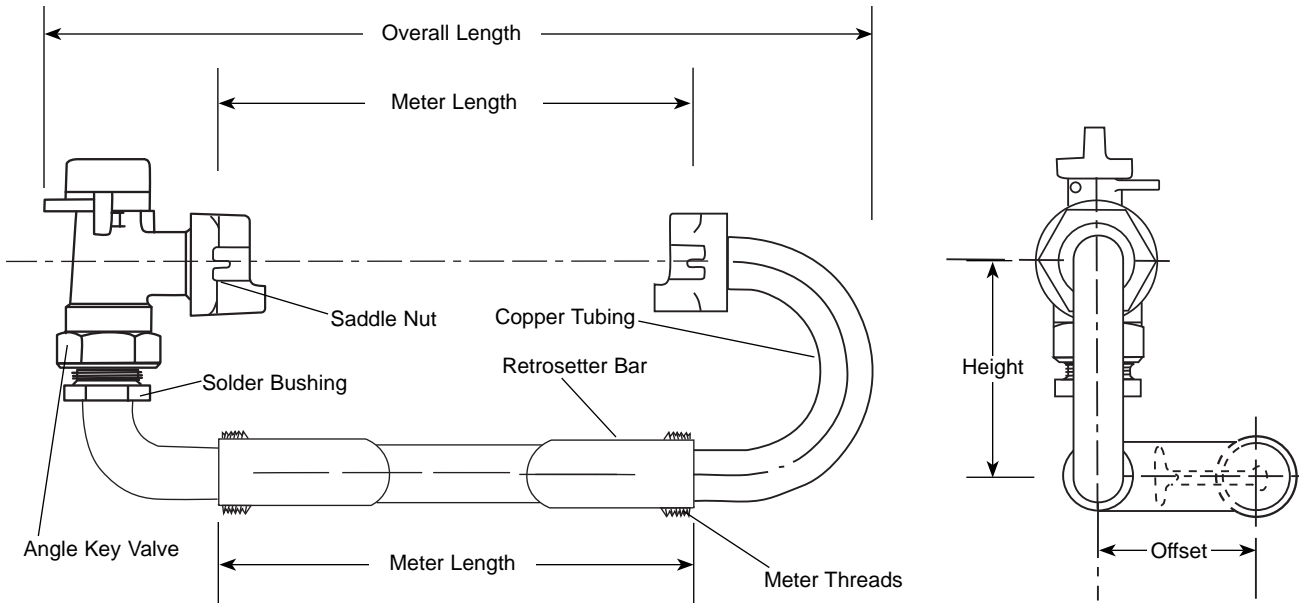


SUBMITTAL INFORMATION

Retrossetters - (RETRO-xCV style)



ANGLE KEY VALVE BY NO VALVE OUTLET



| Meter Size | Meter Length | Overall Length | Approx. Height | Offset | Approx. Wt. Lbs. | Catalog Number | ✓ Submitted Item(s) |
|------------|--------------|----------------|----------------|--------|------------------|----------------|---------------------|
| 5/8" | 7-1/2" | 12-15/16" | 3-3/8" | 2-1/2" | 3.8 | RETRO-1CV | |
| 5/8"x3/4" | 7-1/2" | 12-15/16" | 3-3/8" | 2-1/2" | 4.0 | RETRO-2CV | |
| 1" | 10-1/2" | 16-9/16" | 4-7/8" | 3-3/8" | 7.4 | RETRO-4CV | |

FEATURES

- All brass conforms to AWWA Standard C800 (ASTM B-62 and/or ASTM B-584, UNS NO C83600 - 85-5-5-5)
- Style "C" Retrosetter offsets and raises the meter from the centerline of the service.
- Saddle Nuts hold the meter in place for tightening.
- All Ford Retrossetters are assembled with lead-free solder.
- Ford Retrossetters are furnished with four rubber gaskets, one for each meter nut and two for the bottom bar.
- Conforms to AWWA C700 for Meter Threads.

The Ford Meter Box Company considers the information in this submittal form to be correct at the time of publication. Item and option availability, including specifications, are subject to change without notice. Please verify that your product information is current.



The Ford Meter Box Company, Inc.

P.O. Box 443, Wabash, Indiana U.S.A. 46992-0443

Phone: 260-563-3171 / Fax: 800-826-3487

Overseas Fax: 260-563-0167

<http://www.fordmeterbox.com>

01/02/08

Submitted By: