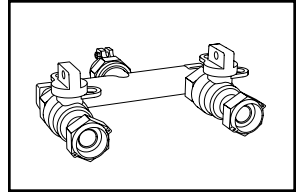
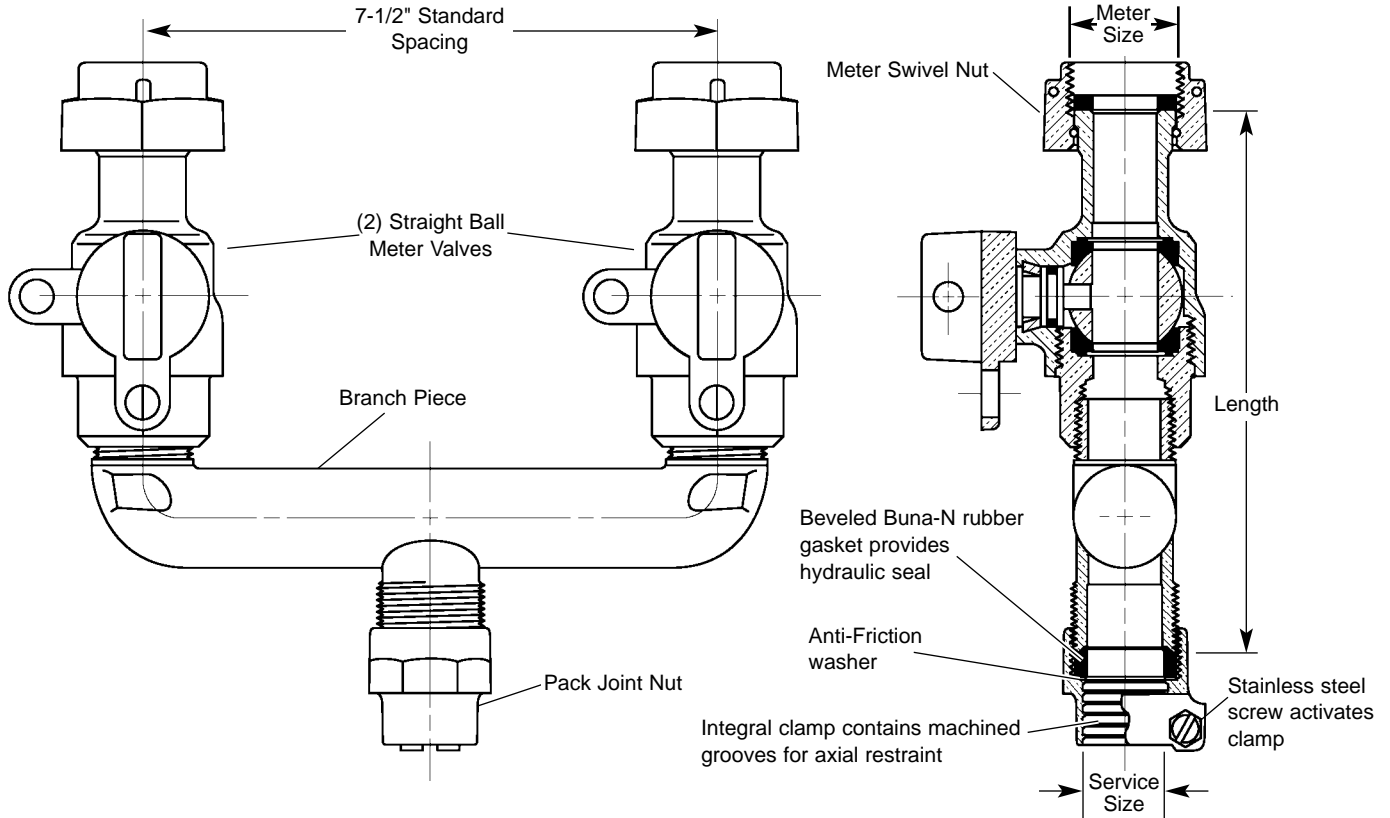


# SUBMITTAL INFORMATION

**Straight Ball Valve Branch Assembly - (UVBS43-xxW style)**



**PACK JOINT FOR COPPER OR PLASTIC TUBING (CTS) INLET BY TWO METER SWIVEL NUT OUTLETS**



SERVICE SIZE	METER SIZE	LENGTH	APPROX. WT. LBS.	Components			Assembly
				BRANCH PIECE	VALVES (2)	CATALOG NUMBER	✓ SUBMITTED ITEM(S)
1"	5/8"	5-3/4"	4.4	U48-43	B13-231W	UVBS43-31W	
1"	5/8" x 3/4" or 3/4"	5-3/4"	4.5	U48-43	B13-232W	UVBS43-32W	
1"	5/8"	5-7/8"	4.2	U48-43	B13-231W	UVBS43-41W	
1"	5/8"	5-7/8"	4.0	U48-43-65	B13-231W	*UVBS43-41W-65	
1"	5/8" x 3/4" or 3/4"	5-7/8"	4.4	U48-43	B13-232W	UVBS43-42W	
1"	5/8" x 3/4" or 3/4"	5-7/8"	4.2	U48-43-65	B13-232W	*UVBS43-42W-65	

\* Available with 6-1/2" spacing between centers of meter valves. Add "-65" to the Catalog Number.

## FEATURES

- All brass conforms to AWWA Standard C800 (ASTM B-62, UNS NO C83600 - 85-5-5-5)
- All Branch Valve Assemblies have Padlock Wings.
- Meter gaskets are furnished with all Branch Valve Assemblies.
- Meets 300 PSI pressure requirements of AWWA Standard C800.

**Optional Full 360° Tee Head rotation.** Add "R" to end of Catalog Number.

The Ford Meter Box Company considers the information in this submittal form to be correct at the time of publication. Item and option availability, including specifications, are subject to change without notice. Please verify that your product information is current.



**The Ford Meter Box Company, Inc.**

P.O. Box 443, Wabash, Indiana U.S.A. 46992-0443

Phone: 260-563-3171 / Fax: 800-826-3487

Overseas Fax: 260-563-0167

<http://www.fordmeterbox.com>

09/05/01

Submitted By: