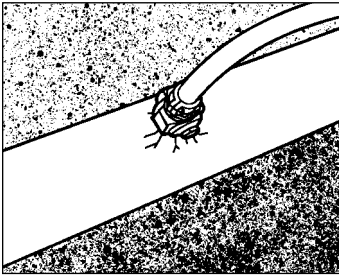
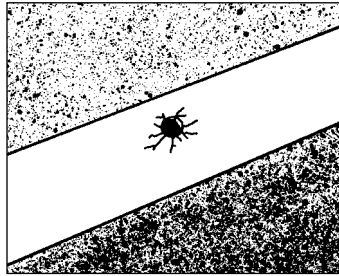


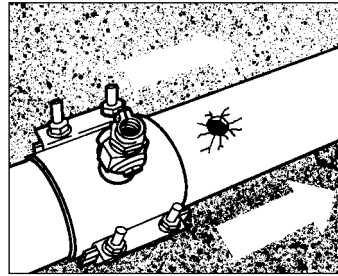
# INSTALLATION PROCEDURE - FRS202



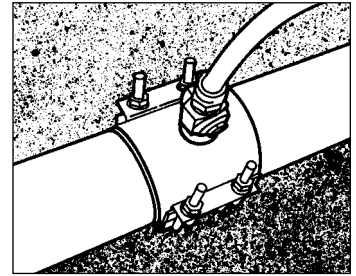
**Leak and Pipe Confirmation**  
Confirm the leak location by cleaning and examining pipe. Check the diameter of the pipe to make certain you are using the correct size saddle.



**Pipe Preparation**  
Shut off the water supply if possible and remove the Corporation Stop from the pipe. Scrape the pipe to remove as much dirt and corrosion as possible so the surface around the leak and the entire saddle contact area is smooth.



**Saddle Preparation**  
Install corporation stop into saddle while holding the saddle boss stationary with another wrench. Back off the nuts on the saddle bolts to the end of the bolts, but do not remove them. Separate one side of the saddle by unhooking the top and bottom pieces, taking note how the pieces are to be reassembled. Lubricate the pipe and saddle gasket with soapy water or an acceptable lubricant to achieve best results.



**Saddle Installation**  
Slip the saddle around the pipe next to hole and rehook the top and bottom. Make certain the gasket is free of foreign material and there is nothing lodged between the gasket and pipe. Center the saddle over the damaged section. Hand-tighten the nuts evenly. Torque the nuts evenly with incremental torque settings to a maximum of 50-60 ft.lbs. Recheck the saddle bolt torque before back filling.

## PRECAUTIONS:

1. Check the diameter of the pipe to make certain you are using the correct size saddle.
2. ALWAYS RECHECK TORQUE AND PRESSURE TEST FOR LEAKS BEFORE BACKFILLING.
3. Backfill and compact carefully around the saddle, corpstop and service line according to the pipe manufacturer's instructions.



**The Ford Meter Box Co., Inc.** 775 Manchester Avenue, P.O. Box 443, Wabash, Indiana, USA 46992-0443  
Telephone: 260-563-3171 FAX: 800-826-3487 Overseas FAX: 260-563-0167 <http://www.fordmeterbox.com>