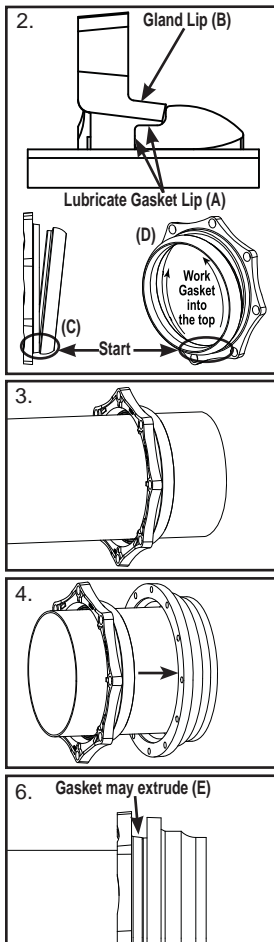


INSTALLATION INSTRUCTIONS FOR 14" - 24" UNI-FLANGE® TRANSITION GASKET

CAREFULLY FOLLOW INSTRUCTIONS FOR A PROPER INSTALLATION



1. Before assembly, **INSPECT THE GASKET AND MJ GLAND.** (Note: If ordered with a MJ Gland, the transition gasket may ship already attached. If the gasket is in place proceed to Step 3.)

2. **INSTALL THE TRANSITION GASKET INTO THE GLAND LIP.** Lubricate the lip (Gasket Lip A) of the gasket with an approved pipe lubricant meeting AWWA C111. Insert the outer diameter of the Gasket Lip (A) into the inner diameter of the Gland Lip (B) and press the gasket into the gland. Start at the bottom (C) and work around to the top (D). **Note that twisting the Gasket Lip (A) inward and under Gland Lip (B) may be required for easier assembly.**

3. **INSTALL THE MJ GLAND WITH THE GASKET. It is not recommended to install the gasket and gland separately.** Clean the MJ fitting socket and plain pipe end. Lubricate MJ fitting socket, gasket, and plain pipe end with an approved pipe lubricant meeting AWWA C111. Place the gland/gasket assembly on the plain pipe end with the gasket facing the plain pipe end.

4. **INSERT THE PIPE INTO THE MJ FITTING SOCKET.** Push the gland/gasket assembly toward the socket and center it around the pipe (Note that the gasket centers the gland when assembled). Insert tee bolts and/or rods and hand tighten.

5. **TIGHTEN THE BOLTS/RODS** to the recommended torque range of 65-75 ft-lbs. Tighten in an alternating manner, (6 o'clock, 12 o'clock, 9 o'clock, 3 o'clock) maintaining the same gap between the gland and the face of the MJ bell at all points around the socket. Repeat the alternating process until all bolts/rods are within the recommended torque range. Use of a torque wrench is strongly recommended and required to ensure proper torque. It is important to ensure that the same torque has been evenly applied to each bolt/rod.

6. **NOTE** that after installation, on some sizes, the gasket may extrude (E) out from the MJ cavity between the MJ face and MJ gland.



Read these instructions
prior to installation



The Ford Meter Box Co., Inc. 775 Manchester Avenue, P.O. Box 443, Wabash, Indiana, USA 46992-0443
Telephone: 260-563-3171 FAX: 800-826-3487 Overseas FAX: 260-563-0167 <http://www.fordmeterbox.com>

FORM # 91915-99

01/14



The Ford Meter Box Co., Inc. 775 Manchester Avenue, P.O. Box 443, Wabash, Indiana, USA 46992-0443
Telephone: 260-563-3171 FAX: 800-826-3487 Overseas FAX: 260-563-0167 <http://www.fordmeterbox.com>

FORM # 91915-99

01/14