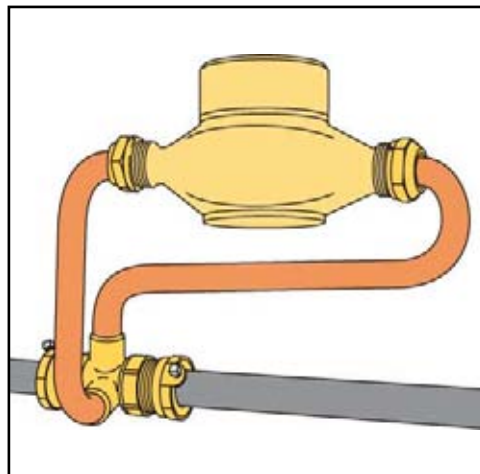
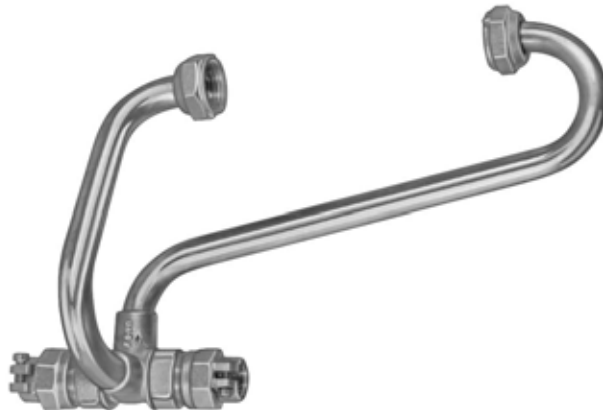


# Pretzelhorns - *For metering existing services*

The Ford Pretzelhorn provides easy installation of a meter in a short run of horizontal pipe or where space is crowded by gas or drain pipes, water heaters, or other equipment.

The Pretzelhorn can be installed in 7-1/2" of pipe and can be turned to place the meter either to the right or left of the cut-out section. Pretzelhorns are connected to the piping with removable Pack Joint Assemblies, the same as Kornerhorns and Drophorns. The picture below shows a typical Pretzelhorn installation.



The above illustration shows a PH-2 Pretzelhorn for a 5/8"x3/4" meter with two PJA5-13 Pack Joint Assemblies for installation in an existing 3/4" iron pipe service.

CATALOG NUMBER	METER SIZE	APPROX. WT. LBS.	STD. PKG. QTY.
PH-1	5/8"	2.5	1
PH-2	5/8"x3/4"	2.6	1
PH-3	3/4"	2.7	1
PH-4	1"	4.8	1

**NOTE:** All solder joints on Ford Inside Setters are made with *lead-free solder*.

Ford Pretzelhorns are manufactured to position the meter to the right of the body as shown above. Occasionally, installation space constraints require Pretzelhorns with the meter positioned left of the body. Designate this option by adding a "-L" to the end of the part number. Example: PH-2-L.

Pack Joint Assembly pipe connections or solder connections available for Pretzelhorns are identical to those offered for Kornerhorns and are listed on page 11.