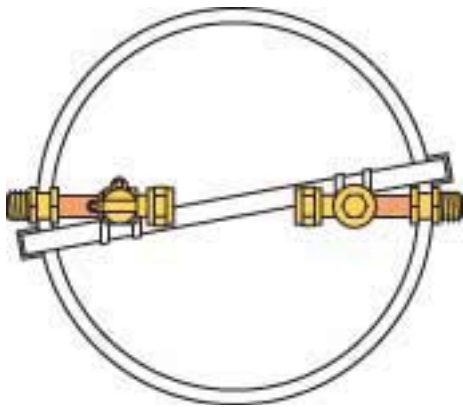


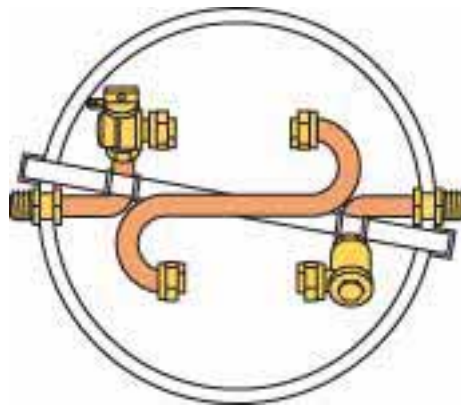
Plastic Pit Setter for Moderate to Cold Climates

For 5/8", 5/8"x3/4", 3/4" and 1" Meters

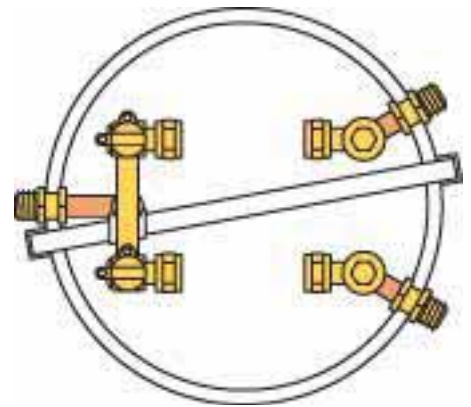
Plastic Pit Setter Design for Single Lid Type (Cover with a 4" depth)



Single Meter Setting



Tandem Setting

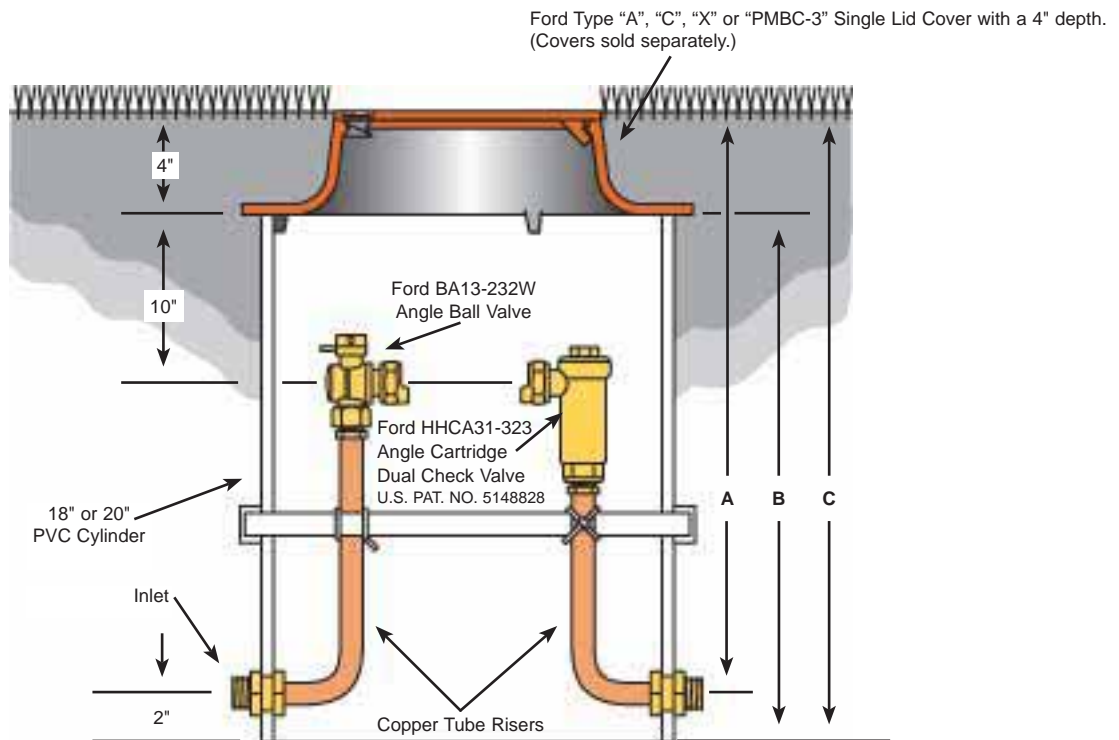


Dual Setting

Vertical Measurements

(Pit Diameter is 18" or 20")

PIT DEPTH	SERVICE LINE DEPTH "A"	PVC CYLINDER LENGTH "B"	TOTAL PIT DEPTH "C"
3 Ft. Pit	36"	34"	38"
4 Ft. Pit	48"	46"	50"
5 Ft. Pit	60"	58"	62"
6 Ft. Pit	72"	70"	74"

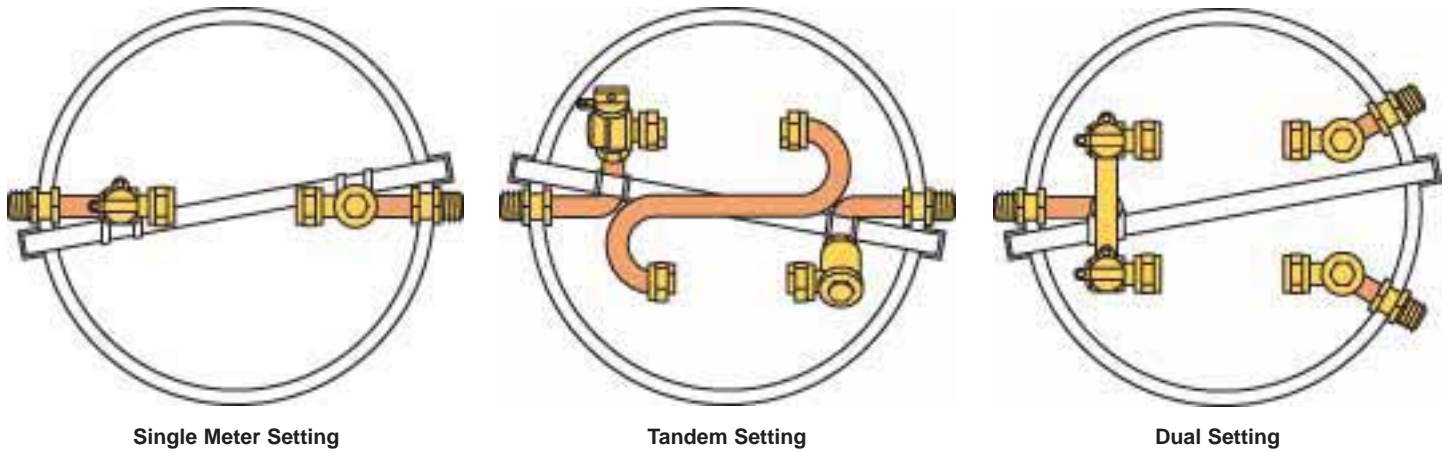


The drawing above shows a Plastic Pit Setter with optional Inlet Angle Ball Valve and Outlet Angle Cartridge Dual Check Valve.

Plastic Pit Setter for Cold Climates

For 5/8", 5/8"x3/4", 3/4" and 1" Meters

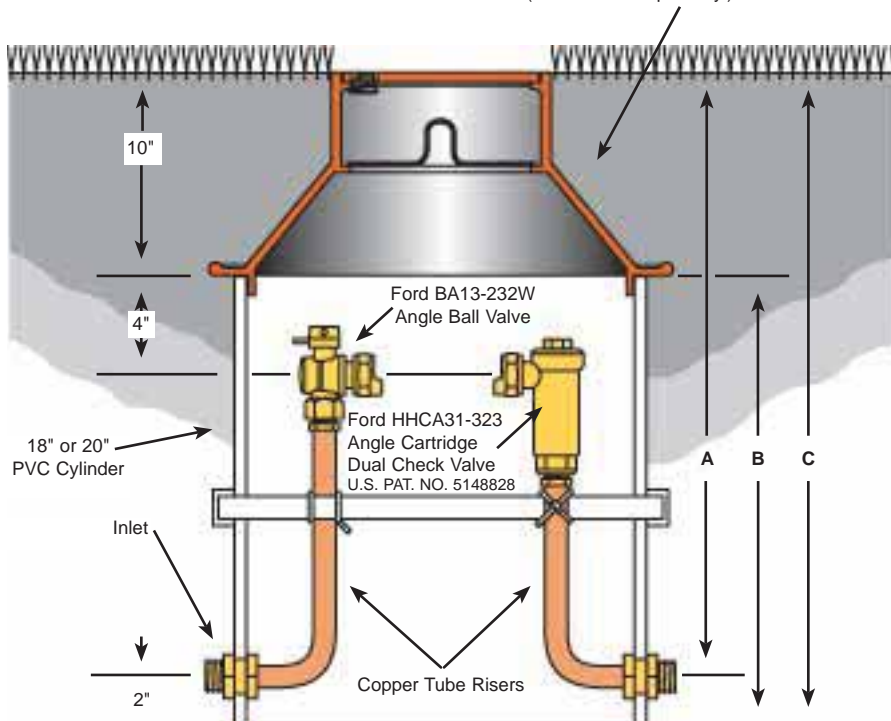
Plastic Pit Setter Design for Double Lid Type (Cover with a 10" depth)



Vertical Measurements (Pit Diameter is 18" or 20")

PIT DEPTH	SERVICE LINE DEPTH "A"	PVC CYLINDER LENGTH "B"	TOTAL PIT DEPTH "C"
3 Ft. Pit	36"	28"	38"
4 Ft. Pit	48"	40"	50"
5 Ft. Pit	60"	52"	62"
6 Ft. Pit	72"	64"	74"

Ford Type "W" Wabash Double Lid Cover with a 10" depth. (Covers sold separately.)



The drawing above shows a Plastic Pit Setter with optional Inlet Angle Ball Valve and Outlet Angle Cartridge Dual Check Valve.

Plastic Pit Setter for Moderate to Cold Climates

For 5/8", 5/8"x3/4", 3/4" and 1" Meters

How To Order A Plastic Pit Setter

To order a Plastic Pit Setter refer to the drawing on the opposite page and answer each of the following questions to create a Catalog Number for the **Plastic Pit Setter** that meets your setting requirements.

Example: PSBH-222-18-72 = a standard single lid style Plastic Pit Setter with an angle ball valve inlet, outlet angle check valve, for a 5/8"x3/4" meter, inlet and outlet connections for flared copper, 18"x72" pit diameter and depth.

NOTE: To maintain the frost protection principles of meter pit design select a 20" pit diameter for 3/4" and 1" single meter settings and for 5/8"x3/4" tandem meter settings.

NOTE: **Covers** for Plastic Pit Setters *are listed and sold separately in Catalog Section D*. A modest selection of covers is shown on pages 12 and 13 of this catalog section.

① What type of pit setting is required? _____

+

② What type of inlet valve is required? _____

+

③ What type of outlet valve is required? _____

+ (Insert Dash)

④ What meter size is required? _____

+

⑤ What type of inlet connection is required? _____
(see note below)

+

⑥ What type of outlet connection is required? _____
(see note below)

+ (Insert Dash)

⑦ What pit diameter and depth is required? _____
Depth is measured from ground level to service line.
The service line is 2" higher than bottom of pit setter.

NOTE: Setters with angle ball valve will be reduced port unless otherwise requested. Reduced port valves usually provide suitable water flow. (Add "-FP" to the end of the catalog number for full port.)

△ 1" Angle Cascading Dual Check Valve contains 3/4" internal components.

NOTE: Inlet and outlet connections are 3/4" in size, for 5/8", 5/8"x3/4" and 3/4" meter settings, and 1" for 1" meter settings, unless otherwise specified.

A variety of inlet and outlet couplings for Copper, PEP, PVC, and Lead are available. See Catalog Section J. Engineering Drawings are available for standard and/or custom pit setter designs.

***Grip Joint** - for CTS is available. Add "-G" to the Catalog Number.

**Not available for 1" meter. Ford recommends a 20" pit diameter with 5/8" and 5/8"x3/4" tandem and dual meter settings.

***Not available for 3/4" or 1" meters.

TYPE OF SETTING	CODE
Standard for Single Lid Cover	PS
Standard for Double Lid Cover	PD
** Tandem for Single Lid Cover	PTS
** Tandem for Double Lid Cover	PTD
*** Dual Service Line	
for Single Lid Cover	PDS
*** Dual Service Line	
for Double Lid Cover	PDD

INLET VALVE TYPE	CODE
Angle Key Valve	V
Angle Ball Valve	B
Angle Compression Valve	G
No Inlet Valve	-

OUTLET VALVE TYPE	CODE
Angle Key Valve	V
Angle Compression Valve	G
Angle Check Valve	H
△ Angle Dual Check Valve	HH
Angle Cartridge Dual Ck Valve	HC
No Outlet Valve	-

METER SIZE	CODE
5/8" Meter	1
5/8"x3/4" Meter	2
3/4" Meter	3
1" Meter	4

TYPE OF INLET	CODE
Flared Copper	2
PET/CTS Pack Joint*	4
Male Iron Pipe	8

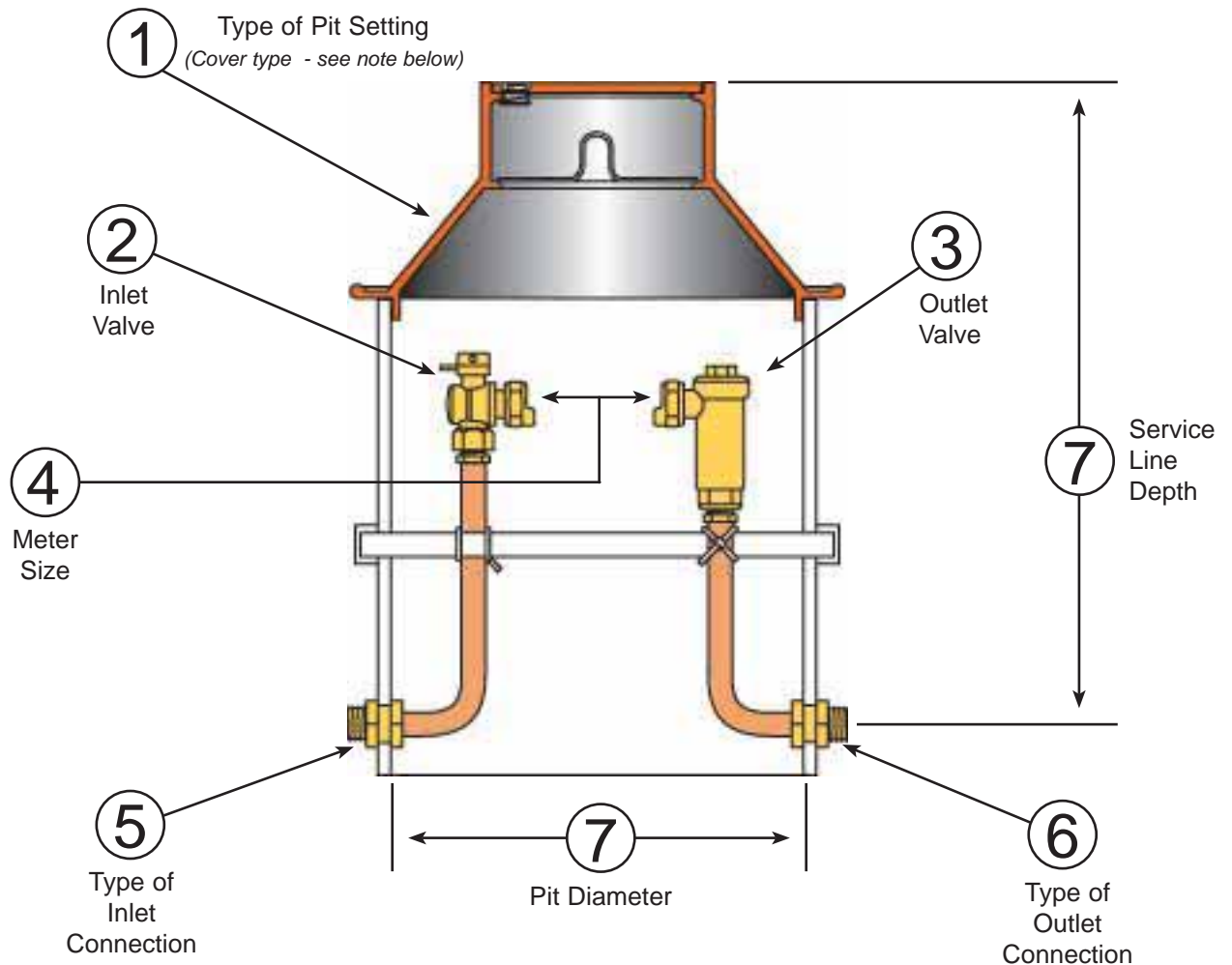
TYPE OF OUTLET	CODE
Flared Copper	2
PET/CTS Pack Joint*	4
Male Iron Pipe	8

PIT DIAMETER AND DEPTH	CODE
*** 18"x36"	18-36
*** 18"x48"	18-48
*** 18"x60"	18-60
*** 18"x72"	18-72
20"x36"	20-36
20"x48"	20-48
20"x60"	20-60
20"x72"	20-72

Plastic Pit Setter for Moderate to Cold Climates

For 5/8", 5/8"x3/4", 3/4" and 1" Meters

How To Order A Plastic Pit Setter



NOTE: A wide variety of 18" and 20" covers can be purchased for Plastic Pit Setters. A complete selection of covers with their specifications and available options are listed in Ford Catalog Section D and must be ordered separately. An abbreviated selection of covers is shown on pages FA-12 and FA-13 of this catalog section.

