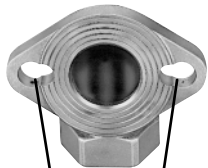
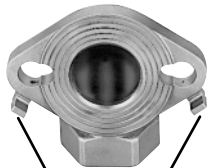




LXI Products meet  
ANSI/NSF Standard 61  
see page 3



2" Flanges have slotted bolt  
holes to fit 1-1/2" meters



Optional  
Support Brackets  
(add "-MSB" to catalog number)

# Flange Meter Couplings

## Flange Ells for 1-1/2" and 2" meters

CATALOG NUMBER	DESCRIPTION		APPROX. WT. LBS.	STD. PKG. QTY.
<b>METER FLANGE BY FEMALE IRON PIPE THREAD</b>				
LF31-66	1-1/2" Meter Flange	x 1-1/2" Female Iron Pipe	3.7	4
LF31-67	1-1/2" Meter Flange	x 2" Female Iron Pipe	4.2	2
LF31-77	1-1/2" & 2" Meter Flange	x 2" Female Iron Pipe	4.6	3
<b>METER FLANGE BY FLARE COPPER</b>				
LF32-66	1-1/2" Meter Flange	x 1-1/2" Flare Copper	5.1	2
LF32-67	1-1/2" Meter Flange	x 2" Flare Copper	7.5	1
LF32-77	1-1/2" & 2" Meter Flange	x 2" Flare Copper	8.1	1
<b>METER FLANGE BY PACK JOINT FOR COPPER OR PLASTIC TUBING (CTS)</b>				
LF34-66	1-1/2" Meter Flange	x 1-1/2" CTS P.J.	4.3	2
LF34-77	1-1/2" & 2" Meter Flange	x 2" CTS P.J.	5.6	2

**Grip Joint** for CTS is available. Add "-G" to the catalog number.

For **Meter Support Brackets** (for Flange Ells), two per flange, add "-MSB" to catalog number