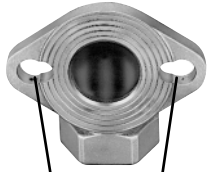




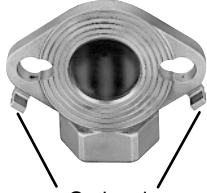
LXI Products meet  
ANSI/NSF Standard 61  
see page 3

# Flange Meter Couplings

## Flange Ells for 1-1/2" and 2" meters



2" Flanges have slotted bolt holes to fit 1-1/2" meters



Optional Support Brackets  
(add "-MSB" to catalog number)

CATALOG NUMBER	DESCRIPTION	APPROX. WT. LBS.	STD. PKG. QTY.
<b>METER FLANGE BY FEMALE IRON PIPE THREAD</b>			
LF31-66	1-1/2" Meter Flange x 1-1/2" Female Iron Pipe	3.7	4
LF31-67	1-1/2" Meter Flange x 2" Female Iron Pipe	4.2	2
LF31-77	1-1/2" & 2" Meter Flange x 2" Female Iron Pipe	4.6	3
<b>METER FLANGE BY FLARE COPPER</b>			
LF32-66	1-1/2" Meter Flange x 1-1/2" Flare Copper	5.1	2
LF32-67	1-1/2" Meter Flange x 2" Flare Copper	7.5	1
LF32-77	1-1/2" & 2" Meter Flange x 2" Flare Copper	8.1	1
<b>METER FLANGE BY PACK JOINT FOR COPPER OR PLASTIC TUBING (CTS)</b>			
LF34-66	1-1/2" Meter Flange x 1-1/2" CTS P.J.	4.3	2
LF34-77	1-1/2" & 2" Meter Flange x 2" CTS P.J.	5.6	2

**Grip Joint** for CTS is available. Add "-G" to the catalog number.

For **Meter Support Brackets** (for Flange Ells), two per flange, add "-MSB" to catalog number

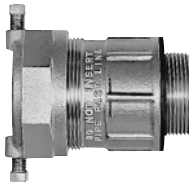
# Lok-Pak Meter Couplings

## Lok-Pak Meter Couplings for Flanged Meters



CATALOG NUMBER	DESCRIPTION	APPROX. WT. LBS.	STD. PKG. QTY.
<b>METER FLANGE BY PACK JOINT FOR COPPER OR PLASTIC TUBING (CTS)</b>			
CF34-66	1-1/2" Meter Flange x 1-1/2" CTS P.J.	3.7	3
CF34-77	2" Meter Flange x 2" CTS P.J.	4.8	5
<b>METER FLANGE BY PACK JOINT FOR IRON PIPE</b>			
CF35-66	1-1/2" Meter Flange x 1-1/2" Iron Pipe P.J.	3.6	3
CF35-77	2" Meter Flange x 2" Iron Pipe P.J.	5.1	3
<b>METER FLANGE BY PACK JOINT FOR CAST IRON PIPE</b>			
CF35-77-2.50	2" Meter Flange x 2" Cast Iron Pipe P.J.	4.3	3
<b>METER FLANGE BY PACK JOINT FOR PVC PIPE</b>			
CF37-66	1-1/2" Meter Flange x 1-1/2" PVC Pipe P.J.	4.0	3
CF37-77	2" Meter Flange x 2" PVC Pipe P.J.	5.7	5

## Lok-Pak Meter Couplings for Tapped Meters



CATALOG NUMBER	DESCRIPTION	APPROX. WT. LBS.	STD. PKG. QTY.
<b>CONNECTION FOR TAPPED METER BY PACK JOINT FOR COPPER OR PLASTIC TUBING (CTS)</b>			
CT34-66	1-1/2" Tapped Meter Connection x 1-1/2" CTS P.J.	2.1	4
CT34-77	2" Tapped Meter Connection x 2" CTS P.J.	3.4	3
<b>CONNECTION FOR TAPPED METER BY PACK JOINT FOR IRON PIPE</b>			
CT35-66	1-1/2" Tapped Meter Connection x 1-1/2" Iron Pipe P.J.	2.2	4
CT35-77	2" Tapped Meter Connection x 2" Iron Pipe P.J.	3.3	3

**Grip Joint** for CTS only is available. Add "-G" to the catalog number. Gaskets are furnished with all meter couplings, Flat drop-in gaskets for flanged meters, flat ring gaskets for tapped meters. Steel bolts and nuts (5/8" x 2-1/2" Zinc Plated) for attaching 1-1/2" & 2" Flanges and Flange Ells are sold separately and are supplied in pairs. (Cat. No.: **PSB**)

### Options Available

No-Lead alloy is available, add "-NL" to the end of the catalog number. With the No-Lead option, brass components in contact with potable water shall be of No-Lead Alloy, UNS/CDA No. C89833. Brass components that do not come in contact with potable water shall be UNS/CDA No. C83600.