

# Ford Retrosetters

## The Convenient Way to Install Single or Dual Check Valves in Existing Meter Services!

Installing single or dual check valves in existing services can be inconvenient, involving plumbing work and expensive labor. In some situations, installation may be impossible, due to existing meter setting space constraints. Ford **Retrosetters** eliminate most of these problems at a very reasonable cost.

Each style of **Retrosetter** is designed for a specific application and one of them should solve **your** particular check valve installation problem.

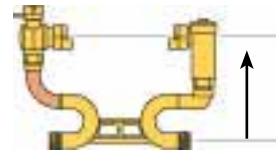
The Ford **Resetter**, available in **Catalog Section "F"**, is available with check valves. The Ford **Resetter** provides another method of installing check valves into existing meter services.

**Style "B" Retrosetter** - Designed for most retrosetting applications, the Style "B" Retrosetter positions the meter directly above the centerline of the service.



Approximate Height the Meter will be raised for style "B" Retrosetter

| OUTLET VALVE TYPE        | METER SIZE               | METER RAISED THIS AMOUNT |
|--------------------------|--------------------------|--------------------------|
| Single & Cascading Style | 5/8", 5/8" x 3/4" & 3/4" | 6"                       |
| Single & Cascading Style | 1"                       | 8-3/8"                   |
| Cartridge Style          | 5/8", 5/8" x 3/4" & 3/4" | 7-1/4"                   |
| Cartridge Style          | 1"                       | 8-3/8"                   |

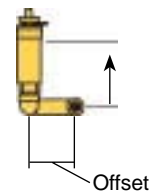


**Style "C" Retrosetter** - The Style "C" Retrosetter is designed for setting where space is very tight or where it is desirable to keep the height of the meter after resetting as shallow as possible. The Style "C" **Retrosetter** offsets the meter from the service line.



Approximate Height the Meter will be raised for style "C" Retrosetter

| OUTLET VALVE TYPE        | METER SIZE               | METER RAISED THIS AMOUNT | OFFSET |
|--------------------------|--------------------------|--------------------------|--------|
| Single & Cascading Style | 5/8", 5/8" x 3/4" & 3/4" | 3-1/2"                   | 2-1/2" |
| Single & Cascading Style | 1"                       | 5"                       | 3-3/8" |
| Cartridge Style          | 5/8", 5/8" x 3/4" & 3/4" | 4-3/4"                   | 2-1/2" |
| Cartridge Style          | 1"                       | 5"                       | 3-3/8" |

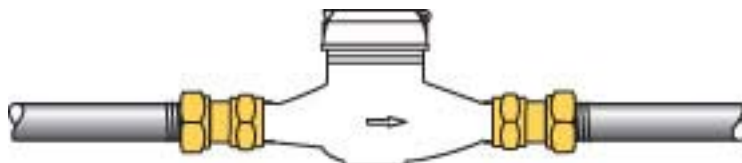


# Ford Retrosetters

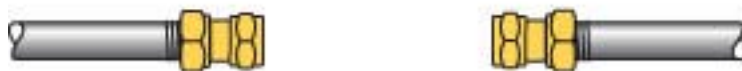
## Quick and Easy Installation

All **Retrosetters** consist of a bottom bar, with inlet and outlet meter threads, which fits exactly into the space occupied by the meter. The meter is re-installed on top of copper arms with an attached swivel meter nut (or an Angle Ball Valve or Angle Key Valve with a meter nut) on the inlet and a single or dual check with a meter nut at the outlet. The entire installation takes only a few minutes to complete.

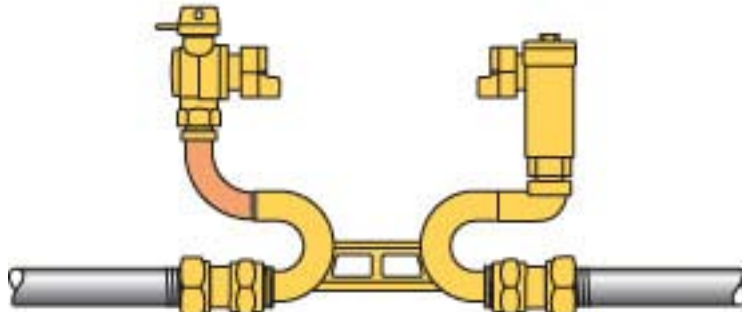
ONE



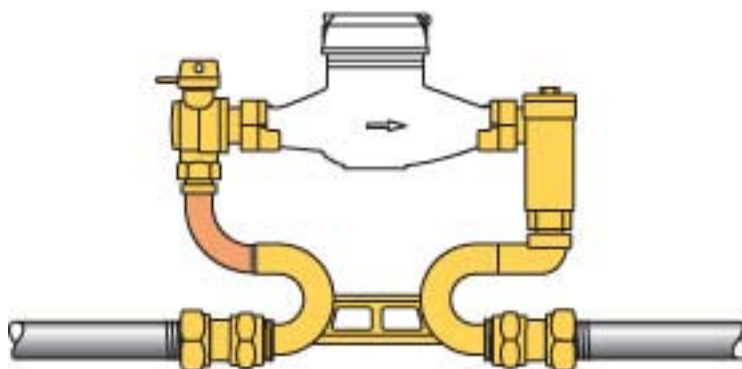
TWO



THREE



FOUR



Four rubber meter gaskets are included, one for each swivel nut and two for the bottom bar.

# Ford Retrosetters

Retrosetters have either an inlet key valve, inlet ball valve or no inlet valve. Outlet valve options include single check, dual check or cartridge dual check valve.

## Retrosetter with no inlet valve



### ANGLE SINGLE CHECK VALVE ON OUTLET

| CATALOG NUMBER | METER SIZE | STYLE | APPROX. WT. LBS. |
|----------------|------------|-------|------------------|
| RETRO-1BH      | 5/8"       | B     | 3.9              |
| RETRO-1CH      | 5/8"       | C     | 3.9              |
| RETRO-2BH      | 5/8"x3/4"  | B     | 4.1              |
| RETRO-2CH      | 5/8"x3/4"  | C     | 4.1              |
| RETRO-3BH      | 3/4"       | B     | -                |
| RETRO-3CH      | 3/4"       | C     | -                |
| RETRO-4BH      | 1"         | B     | 7.1              |
| RETRO-4CH      | 1"         | C     | 7.1              |

### ANGLE DUAL CHECK VALVE ON OUTLET

| CATALOG NUMBER | METER SIZE | STYLE | APPROX. WT. LBS. |
|----------------|------------|-------|------------------|
| RETRO-1BHH     | 5/8"       | B     | 4.1              |
| RETRO-1CHH     | 5/8"       | C     | 4.1              |
| RETRO-2BHH     | 5/8"x3/4"  | B     | 4.4              |
| RETRO-2CHH     | 5/8"x3/4"  | C     | 4.4              |
| RETRO-3BHH     | 3/4"       | B     | -                |
| RETRO-3CHH     | 3/4"       | C     | -                |
| RETRO-4B3HH    | 1"         | B     | 7.4              |
| RETRO-4C3HH    | 1"         | C     | 7.4              |

### ANGLE CARTRIDGE DUAL CHECK VALVE ON OUTLET

| CATALOG NUMBER | METER SIZE | STYLE | APPROX. WT. LBS. |
|----------------|------------|-------|------------------|
| RETRO-1BHC     | 5/8"       | B     | 4.6              |
| RETRO-1CHC     | 5/8"       | C     | 4.6              |
| RETRO-2BHC     | 5/8"x3/4"  | B     | 4.8              |
| RETRO-2CHC     | 5/8"x3/4"  | C     | 4.8              |
| RETRO-3BHC     | 3/4"       | B     | -                |
| RETRO-3CHC     | 3/4"       | C     | -                |
| RETRO-4BHC     | 1"         | B     | 9.8              |
| RETRO-4CHC     | 1"         | C     | 9.8              |

# Ford Retrosetters (Continued)

## Retrosetter with Angle Ball Valve on inlet



### ANGLE BALL VALVE ON INLET AND ANGLE SINGLE CHECK VALVE ON OUTLET

| CATALOG NUMBER | METER SIZE | STYLE | APPROX. WT. LBS. |
|----------------|------------|-------|------------------|
| RETRO-1BVBH    | 5/8"       | B     | 4.8              |
| RETRO-1CVBH    | 5/8"       | C     | 4.8              |
| RETRO-2BVBH    | 5/8"x3/4"  | B     | 5.1              |
| RETRO-2CVBH    | 5/8"x3/4"  | C     | 5.1              |
| RETRO-3BVBH    | 3/4"       | B     | -                |
| RETRO-3CVBH    | 3/4"       | C     | -                |
| RETRO-4BVBH    | 1"         | B     | 9.1              |
| RETRO-4CVBH    | 1"         | C     | 9.1              |

### ANGLE BALL VALVE ON INLET AND ANGLE DUAL CHECK VALVE ON OUTLET

| CATALOG NUMBER | METER SIZE | STYLE | APPROX. WT. LBS. |
|----------------|------------|-------|------------------|
| RETRO-1BVBHH   | 5/8"       | B     | 5.1              |
| RETRO-1CVBHH   | 5/8"       | C     | 5.1              |
| RETRO-2BVBHH   | 5/8"x3/4"  | B     | 5.4              |
| RETRO-2CVBHH   | 5/8"x3/4"  | C     | 5.4              |
| RETRO-3BVBHH   | 3/4"       | B     | -                |
| RETRO-3CVBHH   | 3/4"       | C     | -                |
| RETRO-4BVB3HH  | 1"         | B     | 9.3              |
| RETRO-4CVB3HH  | 1"         | C     | 9.3              |

### ANGLE BALL VALVE INLET AND ANGLE CARTRIDGE DUAL CHECK VALVE OUTLET

| CATALOG NUMBER | METER SIZE | STYLE | APPROX. WT. LBS. |
|----------------|------------|-------|------------------|
| RETRO-1BVBHC   | 5/8"       | B     | 5.7              |
| RETRO-1CVBHC   | 5/8"       | C     | 5.7              |
| RETRO-2BVBHC   | 5/8"x3/4"  | B     | 5.9              |
| RETRO-2CVBHC   | 5/8"x3/4"  | C     | 5.9              |
| RETRO-3BVBHC   | 3/4"       | B     | -                |
| RETRO-3CVBHC   | 3/4"       | C     | -                |
| RETRO-4BVBHC   | 1"         | B     | 11.5             |
| RETRO-4CVBHC   | 1"         | C     | 11.5             |

# Ford Retrosetters (Continued)

## Retrosetter with Angle Key Valve on inlet



### ANGLE KEY VALVE ON INLET AND ANGLE SINGLE CHECK VALVE ON OUTLET

| CATALOG NUMBER | METER SIZE | STYLE | APPROX. WT. LBS. |
|----------------|------------|-------|------------------|
| RETRO-1BVH     | 5/8"       | B     | 4.7              |
| RETRO-1CVH     | 5/8"       | C     | 4.7              |
| RETRO-2BVH     | 5/8"x3/4"  | B     | 5.0              |
| RETRO-2CVH     | 5/8"x3/4"  | C     | 5.0              |
| RETRO-3BVH     | 3/4"       | B     | -                |
| RETRO-3CVH     | 3/4"       | C     | -                |
| RETRO-4BVH     | 1"         | B     | 8.6              |
| RETRO-4CVH     | 1"         | C     | 8.6              |

### ANGLE KEY VALVE ON INLET AND ANGLE DUAL CHECK VALVE ON OUTLET

| CATALOG NUMBER | METER SIZE | STYLE | APPROX. WT. LBS. |
|----------------|------------|-------|------------------|
| RETRO-1BVHH    | 5/8"       | B     | 5.0              |
| RETRO-1CVHH    | 5/8"       | C     | 5.0              |
| RETRO-2BVHH    | 5/8"x3/4"  | B     | 5.3              |
| RETRO-2CVHH    | 5/8"x3/4"  | C     | 5.3              |
| RETRO-3BVHH    | 3/4"       | B     | -                |
| RETRO-3CVHH    | 3/4"       | C     | -                |
| RETRO-4BV3HH   | 1"         | B     | 8.8              |
| RETRO-4CV3HH   | 1"         | C     | 8.8              |

### ANGLE KEY VALVE ON INLET AND ANGLE CARTRIDGE DUAL CHECK VALVE ON OUTLET

| CATALOG NUMBER | METER SIZE | STYLE | APPROX. WT. LBS. |
|----------------|------------|-------|------------------|
| RETRO-1BVHC    | 5/8"       | B     | 5.6              |
| RETRO-1CVHC    | 5/8"       | C     | 5.6              |
| RETRO-2BVHC    | 5/8"x3/4"  | B     | 5.8              |
| RETRO-2CVHC    | 5/8"x3/4"  | C     | 5.8              |
| RETRO-3BVHC    | 3/4"       | B     | -                |
| RETRO-3CVHC    | 3/4"       | C     | -                |
| RETRO-4BVHC    | 1"         | B     | 11.0             |
| RETRO-4CVHC    | 1"         | C     | 11.0             |