

# Ford All Stainless Steel Quality Circle Repair Clamps



LXI Products meet  
ANSI/NSF Standard 61  
see page 3

## Style FS1 (single section) Operating Range .40"

**To order:** Specify Catalog Number x Length of clamp desired.

**Example:** FS1-724 x 12.5 would be a one-section clamp for pipe with an O.D. of between 6.84 and 7.24, and the length of the clamp would be 12.5".

**Options Include:** Buna-N Gasket - add "-N" to Catalog Number  
Conductivity Strips - add "-CS" to Catalog Number

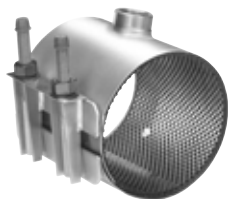
**Note:** Sizes and lengths not listed (including metric) are available upon request. Contact the Ford Meter Box Customer Service Department for information.



NOM. PIPE SIZE	PIPE O.D. RANGE	CATALOG NUMBER	LENGTH AND APPROXIMATE SHIPPING WEIGHT LBS.							
			6"	7.5"	10"	12.5"	15"	20"	24"	30"
2"	2.05-2.25	FS1-225xLength	4 Lbs.	4 Lbs.	5 Lbs.	5 Lbs.	N/A	N/A	N/A	N/A
	2.35-2.63	FS1-263xLength	4	4	5	5	7	N/A	N/A	N/A
2-1/4"x2-1/2"	2.70-3.00	FS1-300xLength	4	5	5	6	8	N/A	N/A	N/A
	2.97-3.25	FS1-325xLength								
3"	3.46-3.70	FS1-370xLength	4	5	5	6	9	N/A	N/A	N/A
	3.73-4.00	FS1-400xLength								
3"-4"	3.96-4.25	FS1-425xLength	5	5	6	7	9	N/A	N/A	N/A
	4.45-4.73	FS1-473xLength								
4"	4.74-5.14	FS1-514xLength	5	6	7	8	10	14	16	21
	4.95-5.35	FS1-535xLength								
	5.22-5.62	FS1-562xLength								
6"	5.95-6.35	FS1-635xLength	N/A	7	9	10	14	17	21	27
	6.56-6.96	FS1-696xLength								
	6.84-7.24	FS1-724xLength								
	7.05-7.45	FS1-745xLength								
8"	7.45-7.85	FS1-785xLength								
	7.95-8.35	FS1-835xLength	N/A	8	10	11	15	19	24	30
	8.54-8.94	FS1-894xLength								
	8.99-9.39	FS1-939xLength								
10"	9.27-9.67	FS1-967xLength								
	9.70-10.10	FS1-1010xLength	N/A	11	14	16	24	28	32	42
	10.64-11.04	FS1-1104xLength								
	11.04-11.44	FS1-1144xLength								
12"	11.34-11.74	FS1-1174xLength								
	11.75-12.15	FS1-1215xLength								
	12.00-12.40	FS1-1240xLength	N/A	13	16	18	27	30	36	48
	12.62-13.02	FS1-1302xLength								
	13.10-13.50	FS1-1350xLength								
	13.40-13.80	FS1-1380xLength								
	13.70-14.10	FS1-1410xLength								
	14.00-14.40	FS1-1440xLength								
NUMBER OF BOLTS			2	2	3	3-4*	4	6	7	9

\*12.5" long clamps in the 10" and 12" Nominal Pipe Size have 4 bolts.

## Tapped Repair Clamps



## Tapping Codes

SIZE	CC (AWWA) THREAD				IP THREAD			
	CODE NUMBER	MIN. CLAMP SIZE		SIZE	CODE NUMBER	MIN. CLAMP SIZE		
		FS1	FS2			FS1	FS2	
3/4"	CC3	2.63	5.24	3/4"	IP3	2.63	5.24	
1"	CC4	2.63	5.24	1"	IP4	2.63	5.24	
1-1/4"	CC5	3.70	5.24	1-1/4"	IP5	3.70	5.24	
1-1/2"	CC6	4.25	5.24	1-1/2"	IP6	3.70	5.24	
2"	CC7	4.73	5.57	2"	IP7	4.25	5.57	

**OUTLET TAPS** for corporation stops are available on Ford Stainless Steel Clamps. The Minimum Clamp Size for each tap type and size is listed in the Tapping Code table above. The tapped outlet is 18-8 Type 304 stainless steel and is "fused" to the clamp band by a fully passivated TIG weld.

**To Order:** 1. Select the proper code from table to match desired size and type of thread.  
2. Add code to catalog number of repair clamp.

Example: The number for an FS1-724-12.5 with a 3/4" CC tap is FS1-724-125-CC3.

**Note:** Tapped Repair Clamps are non-returnable.

# Ford Quality Circle Repair Clamps

## Style F1 (single section) Operating Range .40"



LXI Products meet  
ANSI/NSF Standard 61  
see page 3

**To order:** Specify Catalog Number x Length of clamp desired.

**Example:** F1-724 x 12.5 would be a one-section clamp for pipe with an O.D. of between 6.84 and 7.24, and the length of the clamp would be 12.5".

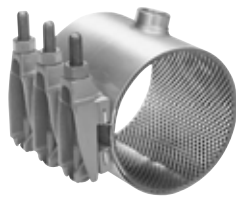
**Options Include:** Buna-N Gasket - add "-N" to Catalog Number  
Conductivity Strips - add "-CS" to Catalog Number  
Blue Fluorocarbon Coated Nuts and Bolts - add "-BBN" to Catalog Number  
Type 304 Stainless Steel Bolts & Nuts - add "-SH" to Catalog Number

**Note:** Sizes and lengths not listed (including metric) are available upon request. Contact the Ford Meter Box Customer Service Department for information.



NOM. PIPE SIZE	PIPE O.D. RANGE	CATALOG NUMBER	LENGTH AND APPROXIMATE SHIPPING WEIGHT LBS.					
			7.5"	10"	12.5"	15"	20"	30"
2"	2.35-2.63	F1-263xLength	7 Lbs.	9 Lbs.	12 Lbs.	14 Lbs.	N/A	N/A
2-1/4"-2-1/2"	2.70-3.00	F1-300xLength	7	10	12	14	N/A	N/A
3"	2.97-3.25	F1-325xLength	8	10	12	14	N/A	N/A
	3.46-3.70	F1-370xLength						
	3.73-4.00	F1-400xLength						
3"-4"	3.96-4.25	F1-425xLength	8	11	13	15	N/A	N/A
	4.45-4.73	F1-473xLength						
4"	4.74-5.14	F1-514xLength	11	15	18	22	29	44
	4.95-5.35	F1-535xLength						
	5.22-5.62	F1-562xLength						
6"	5.95-6.35	F1-635xLength	12	16	20	24	32	48
	6.56-6.96	F1-696xLength						
	6.84-7.24	F1-724xLength						
	7.05-7.45	F1-745xLength						
8"	7.45-7.85	F1-785xLength	13	17	21	25	34	51
	7.95-8.35	F1-835xLength						
	8.54-8.94	F1-894xLength						
	8.99-9.39	F1-939xLength						
10"	9.27-9.67	F1-967xLength	14	19	23	28	37	55
	9.70-10.10	F1-1010xLength						
	10.64-11.04	F1-1104xLength						
12"	11.04-11.44	F1-1144xLength	15	20	25	29	38	58
	11.34-11.74	F1-1174xLength						
	11.75-12.15	F1-1215xLength						
	12.00-12.40	F1-1240xLength						
12"	12.62-13.02	F1-1302xLength	16	21	26	31	41	62
	13.10-13.50	F1-1350xLength						
	13.40-13.80	F1-1380xLength						
	13.70-14.10	F1-1410xLength						
	14.00-14.40	F1-1440xLength						
<b>NUMBER OF BOLTS</b>			3	4	5	6	8	12

## Tapped Repair Clamps



## Tapping Codes

SIZE	CC (AWWA) THREAD				IP THREAD			
	CODE NUMBER	MIN. CLAMP SIZE		SIZE	CODE NUMBER	MIN. CLAMP SIZE		
		F1	F2 (W)			F1	F2 (W)	
3/4"	CC3	2.63	5.60	3/4"	IP3	2.63	5.60	
1"	CC4	2.63	5.60	1"	IP4	2.63	5.60	
1-1/4"	CC5	3.70	5.60	1-1/4"	IP5	3.70	5.60	
1-1/2"	CC6	4.25	5.60	1-1/2"	IP6	3.70	5.60	
2"	CC7	4.73	5.60	2"	IP7	4.25	5.60	

**OUTLET TAPS** for corporation stops are available on Ford Stainless Steel Clamps. The Minimum Clamp Size for each tap type and size is listed in the Tapping Code table above. The tapped outlet is 18-8 Type 304 stainless steel and is "fused" to the clamp band by a fully passivated TIG weld.

**To Order:** 1. Select the proper code from table to match desired size and type of thread.  
2. Add code to catalog number of repair clamp.

Example: The number for an F1-724-12.5 with a 3/4" CC tap is F1-724-125-CC3.

**Note:** Tapped Repair Clamps are non-returnable.