

# Ford Snap Clamps

## Style FSC

### For Economical Repair of Water Pipe Leaks.

Ford Snap Clamps offer a handy and economical way to repair pinholes and other small leaks that do not require a full gasket seal. A heavy gridded gasket design and "cushion lugs" make them ideal for older pitted pipe that has worn thin over the years.

**To order:** Specify Catalog Number by Length of desired clamp. For example, a FSC-190x6 would be a 6" long clamp for 1-1/2" Standard Steel pipe.

**Shell:** 18-8 Type 304 Stainless Steel.

**Lugs:** Ductile Iron per ASTM A536.

**Finish:** Zinc plated.

**Gaskets:** Buna-N with heavy grid design extended lug to lug.

**Bolts:** AISI C1018 steel, 3/8" and/or 7/16" electrogalvanized with Di-chromate seal.



NOM. PIPE SIZE	PIPE O.D.	CATALOG NUMBER	LENGTH AND APPROXIMATE SHIPPING WEIGHT LBS.							
			3"	CTN. QTY.	6"	CTN. QTY.	9"	CTN. QTY.	12"	CTN. QTY.
1/2"	0.84	FSC-084xLength	.54 Lbs.	25	1.08 Lbs.	12	N/A	-	N/A	-
3/4"	1.05	FSC-105xLength	.55	25	1.10	12	1.7	-	N/A	-
1"	1.32	FSC-132xLength	.56	20	1.12	10	1.7	-	N/A	-
1-1/4"	1.66	FSC-166xLength	.58	18	1.16	12	1.8	-	N/A	-
1-1/2"	1.90	FSC-190xLength	.60	12	1.20	12	1.8	2	2.4	2
2"	2.38	FSC-238xLength	1.00	10	2.00	12	3.0	2	4.0	2
2-1/2"	2.88	FSC-288xLength	1.05	10	2.10	12	3.2	2	4.2	2
3"	3.50	FSC-350xLength	1.30	10	2.60	6	3.9	1	5.2	1
3-1/2"	4.00	FSC-400xLength	1.35	10	2.70	6	4.0	1	5.4	1
4"	4.50	FSC-450xLength	1.40	10	2.80	6	4.2	1	5.6	1
5"	5.56	FSC-556xLength	1.60	6	3.20	3	4.8	1	6.4	1
6"	6.00	FSC-600xLength	1.72	6	3.45	2	5.2	1	6.9	1
	6.63	FSC-663xLength	1.85	6	3.70	2	5.6	1	7.4	1
8"	8.00	FSC-800xLength	2.00	3	4.00	2	6.0	1	8.0	1
	8.63	FSC-863xLength	2.20	3	4.40	2	6.6	1	8.8	1

# Ford Wrap Clamps

## Special Style FSC Clamp with Full-Wrap Gasket

Ford Wrap Clamps offer the same Leak Repair features of the Snap Clamp with the extra assurance of 360° gasket coverage. Specific sizes are available for I.P.S. steel or copper.

**To order:** Specify Catalog Number. Example: an FSC-190-6R would be a 6" long clamp for 1-1/2" Standard Steel pipe.

**Shell:** 18-8 Type 304 Stainless Steel.

**Lugs:** Ductile Iron per ASTM A536.

**Finish:** Zinc plated.

**Gasket:** Buna-N rubber with gridded armored gasket for 360° coverage.

**Bolts:** AISI C1018 steel, 3/8" and/or 7/16" electrogalvanized with di-chromate seal.



NOM. PIPE SIZE	PIPE O.D.	3" LONG CLAMP (1 BOLT)			6" LONG CLAMP (2 BOLTS)		
		CATALOG NUMBER	APPROX. WT. LBS.	CTN. QTY.	CATALOG NUMBER	APPROX. WT. LBS.	CTN. QTY.
1/2"	0.625	FSC-063-3R	.75	25	N/A	-	-
	0.84	FSC-084-3R			FSC-084-6R	-	-
3/4"	0.875	FSC-088-3R	.78	25	FSC-088-6R	1.56	12
	1.05	FSC-105-3R			FSC-105-6R		
1"	1.125	FSC-113-3R	.85	20	FSC-113-6R	1.51	10
	1.32	FSC-132-3R			FSC-132-6R		
1-1/4"	1.375	FSC-138-3R	.92	18	FSC-138-6R	1.87	12
	1.66	FSC-166-3R			FSC-166-6R		
1-1/2"	1.625	FSC-163-3R	1.03	12	FSC-163-6R	2.05	12
	1.90	FSC-190-3R			FSC-190-6R		
2"	2.125	FSC-213-3R	1.50	10	FSC-213-6R	3.00	12
	2.38	FSC-238-3R			FSC-238-6R		

**To order:** Specify Catalog Number. Example: an FSC-190-6R would be a 6" long clamp for 1-1/2" Standard Steel pipe.

# Ford All Stainless Steel Snap Clamps

Style FLSC



Ford All Stainless Steel Snap Clamps offer a handy way to repair pinholes and other small leaks that do not require a full gasket seal. A heavy gridded gasket design and "cushion lugs" make them ideal for older pitted pipe that has worn thin over the years. The All Stainless Steel Snap Clamp offers the same conveniences and performance of the traditional Snap Clamp with the added security of stainless steel lugs and bolts.

**To order:** Specify Catalog Number by Length of desired clamp. For example, a FLSC-190x6 would be a 6" long clamp for 1-1/2" Standard Steel pipe.

**Shell:** 18-8 Type 304 Stainless Steel.

**Lugs:** 18-8 Type 304 Stainless Steel.

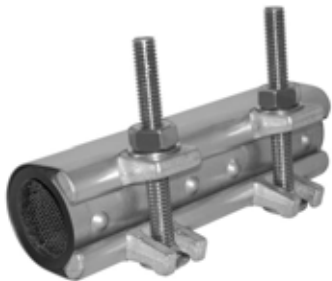
**Gaskets:** Buna-N with heavy grid design extended lug to lug.

**Bolts:** Stainless Steel.

NOM. PIPE SIZE	PIPE O.D.	CATALOG NUMBER	LENGTH AND APPROXIMATE SHIPPING WEIGHT LBS.							
			3"	CTN. QTY.	6"	CTN. QTY.	9"	CTN. QTY.	12"	CTN. QTY.
1/2"	0.84	FLSC-084xLength	.54 Lbs.	25	1.08 Lbs.	12	N/A	-	N/A	-
3/4"	1.05	FLSC-105xLength	.55	25	1.10	12	1.7	-	N/A	-
1"	1.32	FLSC-132xLength	.56	20	1.12	10	1.7	-	N/A	-
1-1/4"	1.66	FLSC-166xLength	.58	18	1.16	12	1.8	-	N/A	-
1-1/2"	1.90	FLSC-190xLength	.60	12	1.20	12	1.8	2	2.4	2
2"	2.38	FLSC-238xLength	1.00	10	2.00	12	3.0	2	4.0	2
2-1/2"	2.88	FLSC-288xLength	1.05	10	2.10	12	3.2	2	4.2	2
3"	3.50	FLSC-350xLength	1.30	10	2.60	6	3.9	1	5.2	1
3-1/2"	4.00	FLSC-400xLength	1.35	10	2.70	6	4.0	1	5.4	1
4"	4.50	FLSC-450xLength	1.40	10	2.80	6	4.2	1	5.6	1
5"	5.56	FLSC-556xLength	1.60	6	3.20	3	4.8	1	6.4	1
6"	6.00	FLSC-600xLength	1.72	6	3.45	2	5.2	1	6.9	1
	6.63	FLSC-663xLength	1.85	6	3.70	2	5.6	1	7.4	1
8"	8.00	FLSC-800xLength	2.00	3	4.00	2	6.0	1	8.0	1
	8.63	FLSC-863xLength	2.20	3	4.40	2	6.6	1	8.8	1

# Ford All Stainless Steel Wrap Clamps

Special All Stainless Steel Style FLSC Clamp with Full-Wrap Gasket



Ford Wrap Clamps offer the same Leak Repair features of the Snap Clamp with the extra assurance of 360° gasket coverage. Specific sizes are available for I.P.S. steel or copper. The All Stainless Steel Wrap Clamp offers the same conveniences and performance of the traditional Wrap Clamp with the added security of stainless steel lugs and bolts.

**To order:** Specify Catalog Number. Example: an FLSC-190-6R would be a 6" long clamp for 1-1/2" Standard Steel pipe.

**Shell:** 18-8 Type 304 Stainless Steel.

**Lugs:** 18-8 Type 304 Stainless Steel.

**Gasket:** Buna-N rubber with gridded armored gasket for 360° coverage.

**Bolts:** Stainless Steel.

NOM. PIPE SIZE	PIPE O.D.	3" LONG CLAMP (1 BOLT)			6" LONG CLAMP (2 BOLTS)		
		CATALOG NUMBER	APPROX. WT. LBS.	CTN. QTY.	CATALOG NUMBER	APPROX. WT. LBS.	CTN. QTY.
1/2"	0.625	FLSC-063-3R	.75	25	N/A	-	-
	0.84	FLSC-084-3R			FLSC-084-6R	-	-
3/4"	0.875	FLSC-088-3R	.78	25	FLSC-088-6R	1.56	12
	1.05	FLSC-105-3R			FLSC-105-6R		
1"	1.125	FLSC-113-3R	.85	20	FLSC-113-6R	1.58	10
	1.32	FLSC-132-3R			FLSC-132-6R		
1-1/4"	1.375	FLSC-138-3R	.92	18	FLSC-138-6R	1.87	12
	1.66	FLSC-166-3R			FLSC-166-6R		
1-1/2"	1.625	FLSC-163-3R	1.03	12	FLSC-163-6R	2.05	12
	1.90	FLSC-190-3R			FLSC-190-6R		
2"	2.125	FLSC-213-3R	1.50	10	FLSC-213-6R	3.00	12
	2.38	FLSC-238-3R			FLSC-238-6R		

**To order:** Specify Catalog Number. Example: an FLSC-190-6R would be a 6" long clamp for 1-1/2" Standard Steel pipe.