

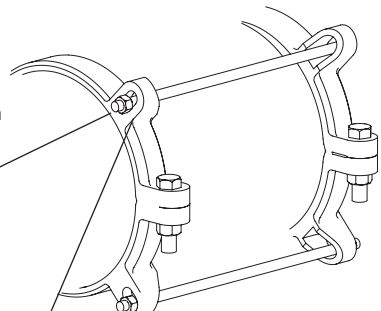
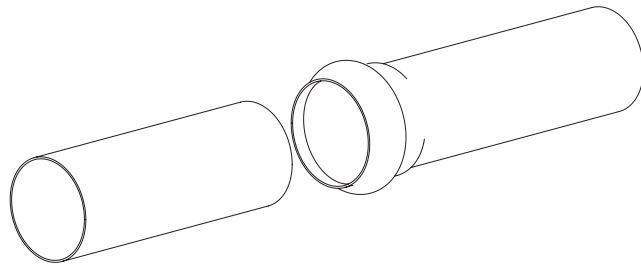
ASSEMBLY INSTRUCTIONS

for 4" - 12" SERIES 1390-x-DWB

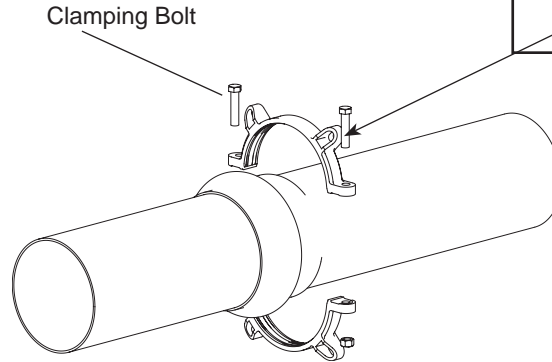
Standard restraint device for new or existing installations of Ductile Iron Pipe or C900 PVC Pipe Bell Joints

IMPORTANT

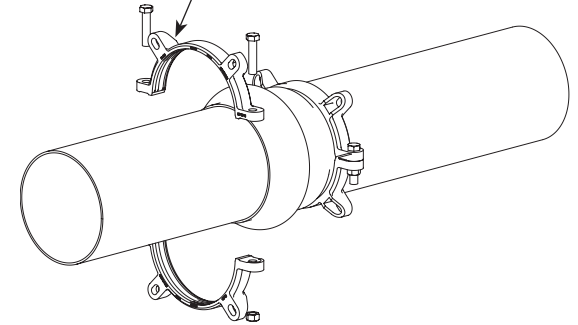
Note: Position the restraints so the nuts for the connecting rods contact the flat side of the ears on each restraint. The restraint will not function properly if installed incorrectly.

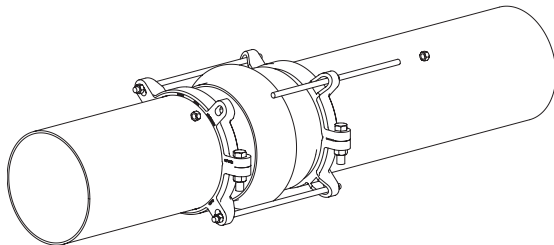
1. Assemble spigot pipe end to bell using standard procedure, following pipe manufacturer's recommendations.



2. Assemble 1/2 of the Series 1390-x-DWB serrated restraint directly behind the pipe bell. Evenly tighten the clamping bolts and nuts to the recommended torque for your pipe type as shown in Table 1.



3. Assemble the remaining serrated restraint onto the spigot end of the pipe using the connecting rods as a guide for position. Evenly tighten the clamping bolts to the recommended torque for your pipe type as shown in Table 1.



4. Insert connecting rods into the slots and snug connecting nuts hand tight. **Do not over-tighten the connecting nuts.**

Table 1

	Recommended Clamping Bolt Torque	
	PVC	DIP
4" and 6"	100 ft-lb	100 ft-lb
8" and 10"	150 ft-lb	150 ft-lb
12"	150 ft-lb	200 ft-lb



The Ford Meter Box Co., Inc. 775 Manchester Avenue, P.O. Box 443, Wabash, Indiana, USA 46992-0443
 Telephone: 260-563-3171 FAX: 800-826-3487 Overseas FAX: 260-563-0167 <http://www.fordmeterbox.com>

