

# FORD MODEL 77 DRILLING MACHINE

## SECTION AB

### DRILLING MACHINE KITS

CATALOG NUMBER	DESCRIPTION	LIST PRICE
<b>DMO-NL</b>	Model 77 Drilling Machine Body Only (items 1 thru 8) (10 lbs.)	<b>\$ 791.44</b>
<b>DMO-1-9A-NL</b>	Model 77 Drilling Machine Only (items 1 thru 9A)	<b>1409.29</b>
<b>DMK-1-12A-NL</b>	Model 77 Drilling Machine Complete Kit (items 1 thru 12) (36 lbs.)	<b>1752.17</b>

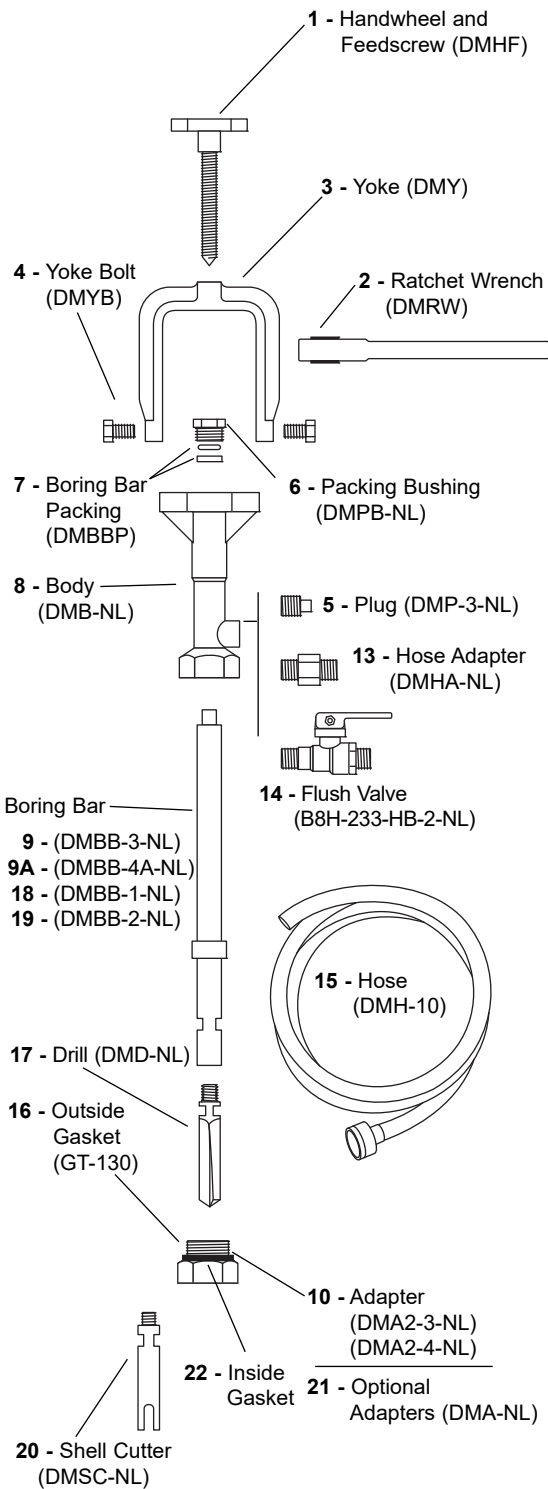
**A  
B**

### DRILLING MACHINE COMPONENTS

REF. No.	DESCRIPTION	CATALOG NUMBER	LIST PRICE
1	Handwheel and Feedscrew	DMHF	\$ 76.97
2	Ratchet Wrench	DMRW	395.94
3	Yoke	DMY	87.39
4	Yoke Bolts (2)	DMYB	9.63 pr.
5	Plug (3/4" iron pipe thread)	DMP-3-NL	13.98
6	Packing Bushing	DMPB-NL	9.42
7	Boring Bar Packing	DMBBP	4.83
8	Body	DMB-NL	193.28
9	3/4" Boring Bar Only (fits 11/16" drill and shell cutter for 3/4" corp stop)	DMBB-3-SS-NL	294.56
9A	1" Boring Bar Only (fits 7/8" drill and shell cutter for 1" corp stop)	DMBB-4A-SS-NL	323.28
10	3/4" Flare Copper Adapter with Gaskets	DMA2-3-NL	49.38
	1" Flare Copper Adapter with Gaskets	DMA2-4-NL	49.38
11	Open End Adjustable Wrenches (2) 1 each of 8" and 10"	DMAW-PR	98.76 pr.
12	Tool Box	DMTB	145.36

### OPTIONAL ITEMS

-	Drilling Machine Ratchet Wrench Repair Kit	DMRWRK	\$ 131.83
13	Hose Adapter for Chip Flushing	DMHA-NL	14.55
14	Ball Valve with Hose Threads for Chip Flushing	B8H-233-HB-2-NL	110.02
15	10 ft. Hose for Chip Flushing	DMH-10	41.82
16	Outside Gasket for All Corp Stop Adapters	GT-130	3.92
	7/16" Drill for 1/2" Corp Stop (fits boring bar DMBB-1-NL)	DMD-1-NL	271.19
	9/16" Drill for 5/8" Corp Stop (fits boring bar DMBB-2-NL)	DMD-2-NL	271.19
	11/16" Drill for 3/4" Corp Stop (fits boring bar DMBB-3-SS-NL)	DMD-3-NL	271.19
	7/8" Drill for 1" Corp Stop (fits boring bar DMBB-4A-SS-NL)	DMD-4A-NL	312.75
18	Boring Bar for 7/16" Drill for 1/2" Corp Stop	DMBB-1-NL	309.52
19	Boring Bar for 9/16" Drill for 5/8" Corp Stop	DMBB-2-NL	319.32
	7/16" Shell Cutter for PVC (fits boring bar DMBB-1-NL)	DMSC-1-NL	285.20
20	11/16" Shell Cutter for PVC (fits boring bar DMBB-3-SS-NL)	DMSC-3-NL	285.20
	7/8" Shell Cutter for PVC (fits boring bar DMBB-4A-SS-NL)	DMSC-4A-NL	305.60
	1/2" Flare Copper Adapter with Gaskets	DMA2-1-NL	47.59
	5/8" Flare Copper Adapter with Gaskets	DMA2-2-NL	60.93
	*1-1/4" Flare Copper Adapter with Gaskets	*DMA2-5-NL	85.02
	3/4" Female Iron Pipe Adapter with Gaskets	DMA1-3-NL	60.93
21	1" Female Iron Pipe Adapter with Gaskets	DMA1-4-NL	60.93
	*1-1/4" Female Iron Pipe Adapter with Gaskets	*DMA1-5-NL	76.78
	*1-1/4" Quick Joint Adapter with Gaskets (CTS)	*DMA4-5-Q-NL	96.93
	3/4" Quick Joint Adapter with Gaskets (PEP)	DMA6-3-Q-NL	56.76
	1" Quick Joint Adapter with Gaskets (PEP)	DMA6-4-Q-NL	89.39
	Inside Gasket for 1/2" Flare Copper Adapter	GT-106	2.17
	Inside Gasket for 5/8" Flare Copper Adapter	GT-107	2.17
	Inside Gasket for 3/4" Flare Copper Adapter	GT-118	0.44
22	Inside Gasket for 1" Flare Copper Adapter	GT-119	2.17
	Inside Gasket for 1-1/4" Flare Copper Adapter	GT-147	2.27
	Inside Gasket for 3/4" Iron Pipe Adapter	GT-114	0.41
	Inside Gasket for 1" Iron Pipe Adapter	GT-120	0.43
	Inside Gasket for 1-1/4" Iron Pipe Adapter	GT-119	2.17



**Note:** 1-1/4", 1-1/2" and 2" adapters, cutters and boring bar on following page.

\* For use with 7/8" (1" nominal) drill or shell cutter. See following page for 1-1/4" nominal cutters and adapters.

**1-1/4", 1-1/2" AND 2" OPTIONS FOR MODEL 77**

The Ford Model 77 Drilling Machine's lightweight design and size makes it ideal for making taps up to 1". However, the Model 77 can be adapted for 1-1/4", 1-1/2" and 2" taps. The following items will allow for OCCASIONAL taps for 1-1/4", 1-1/2" and 2". Please note that the Model 77 Drilling Machine is not recommended for making ROUTINE taps larger than 1".

To make an 1-1/4", 1-1/2" or 2" tap the following items are required:

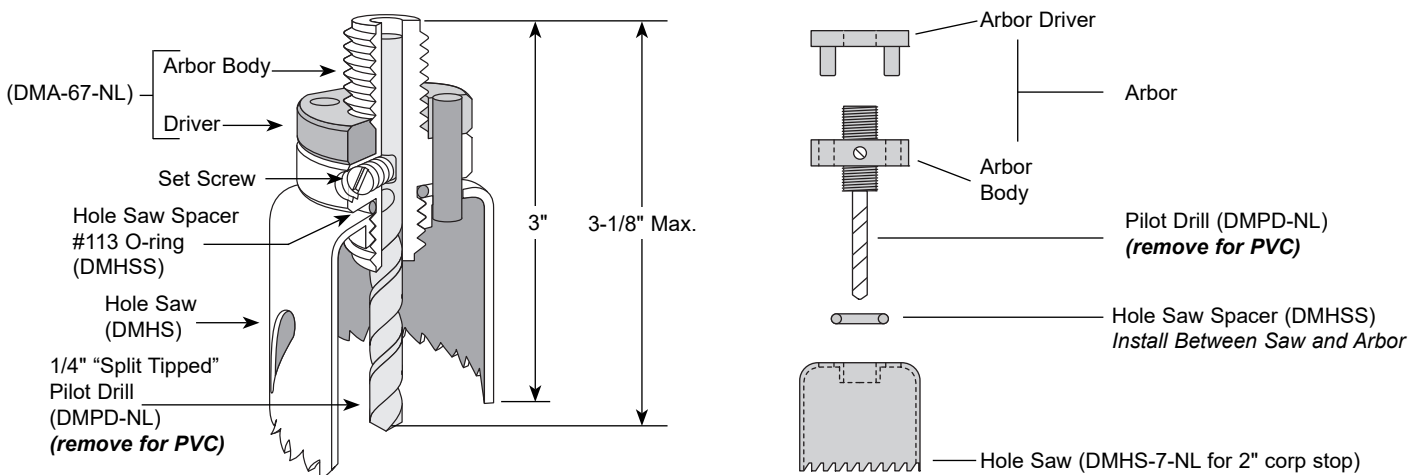
- DMA adapter for corp being used
- DMBB-67-SS-NL boring bar
- DMSC shell cutters (1-1/8", 1-3/8" or 1-7/8") or DMD-5-DI-NL (1-1/8") or for 2" DMHS hole saw (1-7/8") and DMA-67-NL arbor

CATALOG NUMBER	DESCRIPTION	LIST PRICE
<b>ADAPTERS</b>		
*DMA1-5F-SS-NL	1-1/4" Adapter with 1-1/4" FIP Threads for Use with FB400-5-NL and FB500-5-NL Corp Stops	\$ 444.35
DMA1-6-NL	1-1/2" FIP Adapter with Gaskets for Use with FB400-6-NL and FB500-6-NL	135.71
*DMA2-5F-SS-NL	1-1/4" Adapter with 1-1/4" FIP Threads for Use with FB600-5-NL and FB700-5-NL Corp Stops	540.56
DMA2-6-NL	1-1/2" Flare Copper Adapter with Gaskets for Use with FB600-6-NL and FB700-6-NL	135.71
*DMA2-6F-NL	1-1/4" Adapter with 1-1/2" Flare Copper Threads for Use with FB1001-5-NL and FB1101-5-NL Corp Stops	P.O.A.
*DMA4-5F-Q-SS-NL	1-1/4" Quick Joint Adapter with Gaskets (use with 1-1/8" drill or shell cutter)	677.57
DMA4-6-Q-NL	1-1/2" Quick Joint Adapter with Gaskets	135.71
DMA1-67-NL	1-1/2" Adapter with 2" FIP Threads for Use with 1-1/2" FB800-6-NL and FB900-6-NL Corp Stops	135.71
DMA1-7-NL	2" FIP Adapter with Gaskets for Use with FB400-7-NL and FB500-7-NL	166.85
DMA2-7-NL	2" Flare Copper Adapter with Gaskets for Use with FB600-7-NL and FB700-7-NL	166.85
DMA4-7-Q-NL	2" Quick Joint Adapter with Gaskets	166.85
DMA4-7-Q-MR-SS-NL	2" CTS Quick Joint Adapter with Gaskets (for longer Mueller corp stop)	P.O.A.
DMA1-78-NL	2" Adapter with 2-1/2" FIP Threads for Use with 2" FB800-7-NL and FB900-7-NL Corp Stops	166.85
DMA8-6-SS-NL	1-1/2" Adapter with 1-1/2" MIP Threads for Use with 1-1/2" FB1600-6-NL and FB1700-6-NL Corp Stop	468.39
DMA8-6-BSPT-SS-NL	1-1/2" Adapter with 1-1/2" MIP BSPT Threads	P.O.A.
DMA8-7-SS-NL	2" Adapter with 2" MIP Threads for Use with 2" FB1600-7-NL and FB1700-7-NL Corp Stop	520.73
DMA8-7-BSPT-SS-NL	2" Adapter with 2" MIP BSPT Threads	P.O.A.
<b>DRILLS</b>		
DMD-5-DI-NL	1-1/8" Drill for 1-1/4" Corp Stop (fits boring bar DMBB-67-SS-NL)	431.33
<b>HOLE SAWS</b>		
DMHS-7-NL	1-7/8" Hole Saw for 2" Corp Stop (fits arbor DMA-67-NL)	117.74
DMHSS	Package of 6 Hole Saw Spacers	31.40
DMA-67-NL	Arbor Only for Use with Boring Bar DMBB-67-SS-NL (includes DMPD-NL pilot drill and DMHSS spacer)	236.15
<b>SHELL CUTTERS</b>		
DMSC-5-PVC-NL	1-1/8" Shell Cutter for 1-1/4" Corp Stop (fits boring bar DMBB-67-SS-NL)	477.99
DMSC-6-DI-NL	1-3/8" Shell Cutter for Ductile Iron Pipe, 1-1/2" Corp Stop (fits boring bar DMBB-67-SS-NL) Includes Pilot Drill	456.78
DMSC-6-PVC-NL	1-3/8" Shell Cutter for PVC Pipe, 1-1/2" Corp Stop (fits boring bar DMBB-67-SS-NL)	403.79
DMSC-7-DI-NL	1-7/8" Shell Cutter for Ductile Iron Pipe, 2" Corp Stop (fits boring bar DMBB-67-SS-NL) Includes Pilot Drill	513.25
DMSC-7-PVC-NL	1-7/8" Shell Cutter for PVC Pipe, 2" Corp Stop (fits boring bar DMBB-67-SS-NL)	469.17
<b>BORING BAR AND PILOT DRILL</b>		
DMBB-67-SS-NL	Boring Bar for 1-1/4", 1-1/2" and 2" Corp Stops	477.54
DMPD-NL	1/4" Pilot Drill for Use with DMA-67-NL Arbor, DMSC-6-DI-NL or DMSC-7-DI-NL	20.94
<b>ADAPTER GASKETS</b>		
GT-119	Inside Gasket for DMA6-3-Q-NL Adapter	2.17
GT-126	Inside Gasket for DMA4-6-Q-NL Adapter	3.19
GT-127	Inside Gasket for DMA4-7-Q-NL Adapter	3.62
GT-128	Inside Gasket for DMA6-4-Q-NL Adapter	3.52
GT-132	Inside Gasket for DMA2-7-NL and DMA1-78-NL Adapters	4.98
GT-143	Inside Gasket for DMA2-6-NL and DMA1-67-NL Adapters	6.35
GT-142	Inside Gasket for DMA1-6-NL Adapter	6.35
GT-144	Inside Gasket for DMA1-7-NL Adapter	6.35

**Note:** 1-7/8" hole saws require a DMA-67-NL arbor. 1-1/8", 1-3/8" and 1-7/8" shell cutters attach to the DMBB-67-SS-NL boring bar.

\* To be used only with DMBB-67-SS-NL boring bar, DMD-5-DI-NL drill and DMSC-5-PVC-NL shell cutter.

**Example of an Optional DMA-67-NL Arbor - (for hole saws only)**

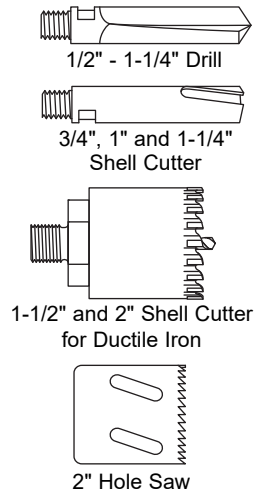


## DRILLING MACHINE OPTION SELECTION CHARTS

Select **ONE** item from **EACH** of the three charts below to determine which cutting tool, adapter and boring bar is needed for a particular drilling requirement.

### CUTTING TOOLS

To select a cutting tool, choose the proper column for type of water main, then select nominal hole size. The proper cutting tool catalog number is in the far left column.



CATALOG NUMBER	DESCRIPTION	ACTUAL CUTTER DIAMETER	TYPE OF WATER MAIN (NOMINAL HOLE SIZE)		
			PVC	IRON	ASBESTOS CEMENT
DMD-1-NL	Drill	7/16"		1/2"	1/2"
DMD-2-NL	Drill	9/16"		5/8"	5/8"
DMD-3-NL	Drill	11/16"		3/4"	3/4"
DMD-4A-NL	Drill	7/8"		1"	1"
DMD-5-DI-NL	Drill	1-1/8"		1-1/4"	1-1/4"
DMSC-1-NL	Shell Cutter	7/16"	1/2"		
DMSC-3-NL	Shell Cutter	11/16"	3/4"		
DMSC-4A-NL	Shell Cutter	7/8"	1"		
DMSC-5-PVC-NL	Shell Cutter	1-1/8"	1-1/4"		1-1/4"
DMSC-6-DI-NL	Shell Cutter	1-3/8"		1-1/2"	
DMSC-6-PVC-NL	Shell Cutter	1-3/8"	1-1/2"		1-1/2"
DMSC-7-DI-NL	Shell Cutter	1-7/8"		2"	
DMSC-7-PVC-NL	Shell Cutter	1-7/8"	2"		2"
DMHS-7-NL	Hole Saw	1-7/8"	2"	2"	2"

### ADAPTERS

To select an adapter, choose the proper column for corporation body outlet thread type (see section A to determine a corporation body outlet thread type and size). The catalog number for the proper adapter is in the far left column.

CATALOG NUMBER	CORPORATION BODY OUTLET THREAD TYPE AND SIZE				INSIDE GASKET OR O-RING
	FLARE COPPER THREAD	MALE IRON PIPE THREADS	SPECIAL QUICKJOINT THREAD	FEMALE IRON PIPE THREADS	
DMA2-1-NL	1/2"				GT-106
DMA2-2-NL	5/8"				GT-107
**DMA2-3-NL	3/4"				GT-118
**DMA2-4-NL	1"				GT-119
†DMA2-5-NL	1-1/4"				GT-147
DMA2-6-NL	1-1/2"				GT-143
DMA2-7-NL	2"				GT-132
DMA1-3-NL		3/4"			GT-114
DMA1-4-NL		1"			GT-120
†DMA1-5-NL		1-1/4" (F/FB800-4 and F/FB900-4)			GT-119
DMA1-5F-SS-NL		1-1/4" (F/FB400-4 and F/FB500-4)			ORING-650220-EP
DMA1-6-NL		1-1/2"			GT-142
DMA1-67-NL		2" (FB800-6/FB900-6)			GT-143
DMA1-7-NL		2"			GT-144
DMA1-78-NL		2-1/2" (FB800-7/FB900-7)			GT-132
DMA2-5F-SS-NL	1-1/4"				GT-147
DMA2-6F-NL	1-1/2"				GT-143
†DMA4-5-Q-NL			1-1/4" CTS		GT-128
DMA4-5F-Q-SS-NL			1-1/4" CTS		GT-138
DMA4-6-Q-NL			1-1/2" CTS		GT-126
DMA4-7-Q-NL			2" CTS		ORING-GT-127
DMA4-7-Q-MR-SS-NL			2" CTS		GT-127
DMA6-3-Q-NL			3/4" PEP		GT-119
DMA6-4-Q-NL			1" PEP		GT-128
DMA8-6-SS-NL				1-1/2" (1-1/2" FB1600/FB1700 Ballcorps)	ORING-650223-BN
DMA8-7-SS-NL				2" (2" FB1600/FB1700 Ballcorps)	ORING-650227-BN

### BORING BARS

Select the boring bar that corresponds to the cutting tool(s) that meet your drilling requirements. The catalog number for the proper boring bar is in the far left column.



Catalog Number	Corresponding Cutting Tools
DMBB-1-NL	DMD-1-NL, DMSC-1-NL
DMBB-2-NL	DMD-2-NL
▲▲ DMBB-3-SS-NL	DMD-3-NL, DMSC-3-NL
▲▲ DMBB-4A-SS-NL	DMD-4A-NL, DMSC-4A-NL
DMBB-67-SS-NL	DMSC-6-DI-NL, DMSC-6-PVC-NL, DMSC-7-DI-NL, DMSC-7-PVC-NL, DMD-5-DI-NL, DMSC-5-PVC-NL
DMBB-67-SS-NL	DMHS-7-NL
* DMA-67-NL	DMHS-7-NL

#### NOTES:

- \* DMA-67-NL (drilling machine arbor) is required only for 2" hole saw, DMHS-7-NL.
- \*\* This item is included in the complete drilling machine kit, catalog number DMK-1-12A-NL.
- ▲ This item is included in the drilling machine only, catalog number DMO-1-9A-NL.
- † For use with 7/8" (1" nominal) drill or shell cutter.

# DRILLING MACHINE ADAPTERS

**Table of Recommended Drill Sizes**  
(for installation of corporation stops in service clamps or saddles with a drilling machine)

CORPORATION STOP SIZE	1/2"	5/8"	5/8" x 3/4"	3/4"	3/4" x 1"	1"	1-1/4"	1-1/2"	2"
Maximum Drill Size for Stop with AWWA Thread Inlet	7/16"	9/16"	9/16"	11/16"	11/16"	15/16"	1-3/16"	1-7/16"	1-7/8"
Maximum Drill Size for Stop with Iron Pipe Thread Inlet	7/16"	-	-	11/16"	11/16"	7/8"	1-3/16"	1-7/16"	1-7/8"

## Recommended Drilling Machine Adapters

SIZE	FORD CORPORATION NUMBER	OUTLET THREADS	MUELLER		ROMAC	RIDGID	REED	FORD	
			E-4 & E-5	D-4 & D-5	TAPMATE TOO	MLT3401	DM1100	MODEL 77	SIMTAP
1/2"	F1000	1/2" Fl. Copper	63796	-	-	-	-	DMA2-1-NL	-
5/8" x 3/4"	F1000	3/4" Fl. Copper	52019	37902	351-05-506	92097	08423	DMA2-3-NL	SIMDMA2-3-NL
3/4"	F (or FB) 1000, 1100								
3/4"	F (or FB) 1001, 1101, 1002, 1102	1" Fl. Copper	36750	37903	351-05-508	92102	08424	DMA2-4-NL	SIMDMA2-4-NL
3/4" x 1"	F (or FB) 1000, 1100								
1"	F (or FB) 1000, 1100								
3/4" x 1"	F1001, 1101, 1002, 1102	1-1/4" Fl. Copper	45385	37904	351-05-510	92107	-	DMA2-5-NL	SIMDMA2-5-NL
1"	F (or FB) 1001, 1101, 1002, 1102								
1" x 1-1/4"	F (or FB) 1000, 1100								
1-1/4"	FB1000, 1100	1-1/2" Fl. Copper	501947	37905	351-05-512	92112	08425	DMA2-6-NL	SIMDMA2-6-NL
1-1/4" x 1-1/2"	FB1000, 1100								
1-1/2"	FB1000, 1100, 1002, 1102	2" Fl. Copper	508201	37906	351-05-516	92117	08426	DMA2-7-NL	**See Note
1-1/2" x 2"	FB1001, 1101								
2"	FB1000, 1100								
	FB1001, 1101, 1002, 1102								

### SPECIAL ADAPTERS

3/4"	F (or FB) 1001-3-Q, 1101-3-Q	Special Thread	508919	508917	-	-	08423	DMA6-3-Q-NL	SIMDMA6-3-Q-NL
1"	F (or FB) 1001-4-Q, 1101-4-Q		508920	508918	-	-	08424	DMA6-4-Q-NL	SIMDMA6-4-Q-NL
1-1/4"	FB1000-5-Q, 1100-5-Q		-	-	-	-	-	*DMA4-5F-Q-SS-NL	SIMDMA4-5-Q-NL
1-1/2"	FB1000-6-Q, 1100-6-Q		501949	507644	351-05-712	92157	08431	DMA4-6-Q-NL	SIMDMA4-6-Q-NL
2"	FB1000-7-Q, 1100-7-Q		508199	507645	351-05-716	92162	08432	DMA4-7-Q-NL	SIMDMA4-7-Q-NL

\* Requires DMBB-67-SS-NL boring bar.

\*\* Use the SIMTAP™ drilling machine body without an adapter.

## Recommended Tapping Machine Adapters

SIZE	FORD CORPORATION NUMBER	OUTLET THREADS	MUELLER			REED	RIDGID
			B-100 & B-101	B	A-2 & A-3	TM100	MLT3401
5/8" x 3/4"	F1000	3/4" Fl. Copper	680600	680600	680600	98423	92182
3/4"	F (or FB) 1000, 1100						
3/4"	F (or FB) 1001, 1101, 1002, 1102	1" Fl. Copper	680601	680601	680601	98424	92187
3/4" x 1"	F (or FB) 1000, 1100						
1"	F (or FB) 1000, 1100						
3/4" x 1"	F1001, 1101, 1002, 1102	1-1/4" Fl. Copper	680602	-	680602	-	-
1"	F (or FB) 1001, 1101, 1002, 1102						
1" x 1-1/4"	F (or FB) 1000, 1100						
1-1/4"	FB1000, 1100	1-1/2" Fl. Copper	-	-	88640	-	-
1-1/4" x 1-1/2"	FB1000, 1100						
1-1/2"	FB1000, 1100, 1002, 1102	2" Fl. Copper	-	-	88641	-	-
1-1/2" x 2"	FB1001, 1101						
2"	FB1000, 1100						
	FB1001, 1101, 1002, 1102						

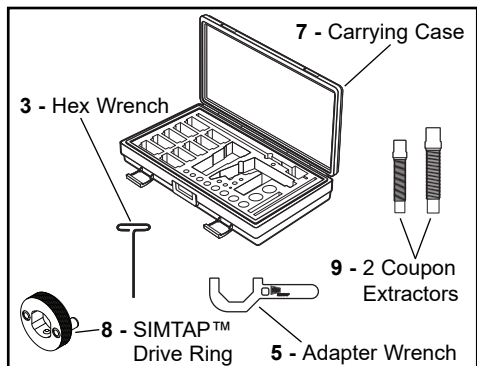
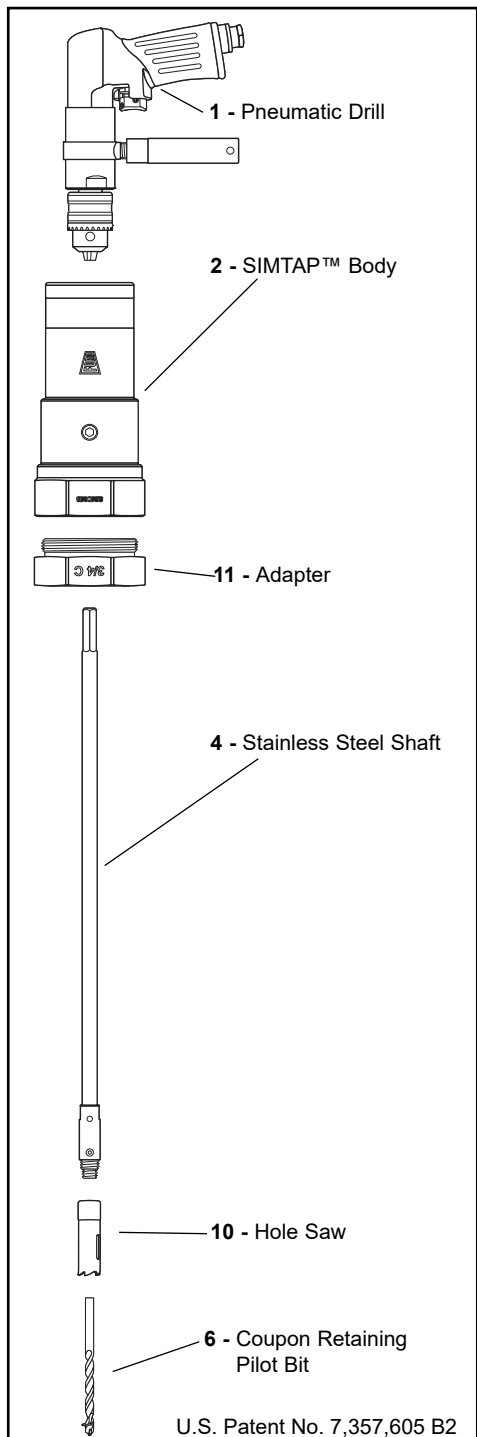
### SPECIAL ADAPTERS

3/4"	F (or FB) 1001-3-Q, 1101-3-Q	Special Thread	680688	-	-	98423	-
1"	F (or FB) 1001-4-Q, 1101-4-Q		680689	-	680689	98424	-
1-1/2"	FB1000-6-Q, 1100-6-Q		-	-	680421	-	-
2"	FB1000-7-Q, 1100-7-Q		-	-	680422	-	-

**WARNING:** Some tapping machine adapters furnished by the tapping machine manufacturers are not threaded all the way to the bottom of the adapter. This can cause problems when installing Ford Pack Joint and Grip Joint Style Corporation Stops. If your adapter is **NOT** threaded to the bottom, a free washer-type screw plug adapter is available from Ford.

# THE FORD SIMTAP™ DRILLING MACHINE

## SECTION AB



### SIMTAP™ KITS

CATALOG NUMBER	DESCRIPTION	LIST PRICE
SIMDMK-NL	Complete SIMTAP™ Drilling Machine Kit with Pneumatic Drill (includes items 1-11) (29.18 lbs.)	\$ 3779.22
SIMDMK-LD-NL	The SIMTAP™ Drilling Machine Kit less Pneumatic Drill (includes items 2-11) (25.58 lbs.)	3509.60
SIMDMK-B-NL	The SIMTAP™ Drilling Machine Base Kit (includes items 2-8) (12.90 lbs.)	1284.77

### COMPONENT PARTS

REF. No.	CATALOG NUMBER	DESCRIPTION	LIST PRICE
1	SIMAD	Pneumatic Drill	\$ 295.32
2	SIMDMB-NL	SIMTAP™ Drilling Machine Body with Bleed-Off Port (combination body and 2" flare copper thread adapter)	909.49
3	SIMHW	Pilot Drill Hex Wrench	16.05
4	SIMDMBB-SS-NL	Stainless Steel Shaft with Dual Arbor	295.32
5	SIMDMAW	Adapter Wrench	166.66
6	SIMDMPD-NL	1/4" Coupon Retaining Pilot Bit	70.41
7	SIMDMTB	SIMTAP™ Drilling Machine Carrying Case	380.10
8	*SIMDRIVE-SS-NL	SIMTAP™ Drive Ring for use with 1-1/2" and 2" Hole Saws	95.51
9	SIMCE1-SS-NL	1/2" Coupon Extractor	56.75
	SIMCE2-SS-NL	5/8" Coupon Extractor	59.12
10	SIMDMHS-3-NL	11/16" Hole Saw	49.90
	SIMDMHS-4-NL	7/8" Hole Saw	50.35
	SIMDMHS-6-NL	1-3/8" Hole Saw	58.03
	SIMDMHS-7-NL	1-7/8" Hole Saw	66.64
11	SIMDMA1-3-NL	3/4" Iron Pipe Thread Adapter (Red)	311.80
	SIMDMA2-3-NL	3/4" Flare Copper Thread Adapter (Purple)	311.80
	SIMDMA1-4-NL	1" Iron Pipe Thread Adapter (Turquoise)	311.80
	SIMDMA2-4-NL	1" Flare Copper Thread Adapter (Grey)	311.80
	SIMDMA6-4-Q-NL	1" PEP Quick Joint Thread Adapter (Blue)	311.80
	SIMDMA1-6-NL	1-1/2" Iron Pipe Thread Adapter (Brown)	311.80
	SIMDMA2-6-NL	1-1/2" Flare Copper Thread Adapter (Orange)	311.80
	SIMDMA4-6-Q-NL	1-1/2" CTS Quick Joint Thread Adapter (Green)	311.80
	SIMDMA1-7-NL	2" Iron Pipe Thread Adapter (Gold)	311.80
	SIMDMA4-7-Q-NL	2" CTS Quick Joint Thread Adapter (Yellow)	311.80

\* Requires newer model boring bar with flats and dimple / detent.

### Optional Items

CATALOG NUMBER	DESCRIPTION	LIST PRICE
SIMDMA6-3-Q-NL	3/4" PEP Quick Joint Thread Adapter (Aqua)	\$ 311.80
SIMDMA1-5-NL	1-1/4" Iron Pipe Thread Adapter (Black)	311.80
SIMDMA2-5-NL	1-1/4" Flare Copper Thread Adapter (Pink)	311.80
SIMDMA4-5-Q-NL	1-1/4" CTS Quick Joint Thread Adapter (Silver)	311.80
SIMDMA1-8-NL	2-1/2" Iron Pipe Thread Adapter (Silver)	311.80
SIMDMHS-5-NL	1-1/8" Hole Saw	55.43
SIMDMSC-3-PVC-NL	11/16" Shell Cutter for PVC	217.81
SIMDMSC-4-PVC-NL	7/8" Shell Cutter for PVC	239.68
SIMDMSC-5-PVC-NL	1-1/8" Shell Cutter for PVC	273.92
SIMDMSC-6-PVC-NL	1-3/8" Shell Cutter for PVC	303.06
SIMDMSC-7-PVC-NL	1-7/8" Shell Cutter for PVC	348.82
**SIMDMSC-6-PVC-HDPE-NL	1-3/8" Shell Cutter for PVC or HDPE	348.51
**SIMDMSC-7-PVC-HDPE-NL	1-7/8" Shell Cutter for PVC or HDPE	411.61
SIMDMBB-285-SS-NL	Stainless Steel Shaft with Dual Arbor - 28-1/2" Long	461.75
SIMDMPD-5-5-NL	1/4" Coupon Retaining Pilot Bit (5-1/2" long for HDPE)	83.07

\*\* Requires 5-1/2" long Pilot Bit (SIMDMPD-5-5-NL)

AB

# THE FORD SIMTAP™ OPTION SELECTION CHARTS

## CUTTING TOOLS

To select a cutting tool, choose the proper column for the type of water main, and select the nominal hole size. The proper cutting tool catalog number is in the far left column.

CATALOG NUMBER	DESCRIPTION	CORP STOP SIZE	TYPE OF WATER MAIN (NOMINAL HOLE SIZE)			
			PVC	IRON	ASBESTOS CEMENT	HDPE
SIMDMHS-3-NL	11/16" Hole Saw	3/4"	-	3/4"	3/4"	-
SIMDMHS-4-NL	7/8" Hole Saw	1"	-	1"	1"	-
SIMDMHS-5-NL	1-1/8" Hole Saw	1-1/4"	-	1-1/4"	1-1/4"	-
SIMDMHS-6-NL	1-3/8" Hole Saw	1-1/2"	-	1-1/2"	1-1/2"	-
SIMDMHS-7-NL	1-7/8" Hole Saw	2"	-	2"	2"	-
SIMDMSC-3-PVC-NL	11/16" Shell Cutter for PVC	3/4"	3/4"	-	3/4"	-
SIMDMSC-4-PVC-NL	7/8" Shell Cutter for PVC	1"	1"	-	1"	-
SIMDMSC-5-PVC-NL	1-1/8" Shell Cutter for PVC	1-1/4"	1-1/4"	-	1-1/4"	-
SIMDMSC-6-PVC-NL	1-3/8" Shell Cutter for PVC	1-1/2"	1-1/2"	-	1-1/2"	-
SIMDMSC-7-PVC-NL	1-7/8" Shell Cutter for PVC	2"	2"	-	2"	-
** SIMDMSC-6-PVC-HDPE-NL	1-3/8" Shell Cutter for PVC or HDPE	1-1/2"	1-1/2"	-	-	1-1/2"
** SIMDMSC-7-PVC-HDPE-NL	1-7/8" Shell Cutter for PVC or HDPE	2"	2"	-	-	2"

\*\* Requires 5-1/2" long Pilot Bit (SIMDMPD-5-5-NL)

## ADAPTER COLOR CODE

To select an adapter, choose the proper column for the corporation body outlet thread type. The catalog number for the proper adapter is in the far left column.

CATALOG NUMBER	DESCRIPTION	COLOR	WT. LBS.
SIMDMA1-3-NL	3/4" Iron Pipe Thread Adapter	Red	1.4
SIMDMA1-4-NL	1" Iron Pipe Thread Adapter	Turquoise	1.4
SIMDMA1-5-NL	1-1/4" Iron Pipe Thread Adapter	Black	1.3
SIMDMA1-6-NL	1-1/2" Iron Pipe Thread Adapter	Brown	1.2
SIMDMA1-7-NL	2" Iron Pipe Thread Adapter	Gold	0.9
SIMDMA1-8-NL	2-1/2" Iron Pipe Thread Adapter	Silver	0.8
SIMDMA2-3-NL	3/4" Flare Copper Thread Adapter	Purple	1.4
SIMDMA2-4-NL	1" Flare Copper Thread Adapter	Grey	1.3
SIMDMA2-5-NL	1-1/4" Flare Copper Thread Adapter	Pink	1.2
SIMDMA2-6-NL	1-1/2" Flare Copper Thread Adapter	Orange	1.0
* Use SIMDMB-NL	2" Flare Copper Thread Adapter	-	-
SIMDMA6-3-Q-NL	3/4" PEP Quick Joint Thread Adapter	Aqua	0.9
SIMDMA6-4-Q-NL	1" PEP Quick Joint Thread Adapter	Blue	1.2
SIMDMA4-5-Q-NL	1-1/4" CTS Quick Joint Thread Adapter	Silver	1.3
SIMDMA4-6-Q-NL	1-1/2" CTS Quick Joint Thread Adapter	Green	1.1
SIMDMA4-7-Q-NL	2" CTS Quick Joint Thread Adapter	Yellow	0.9

**Note:** For recommended drilling machine adapters, see chart on page AB-4.

\* For 2" flare copper, use the SIMTAP™ body without an adapter.

The SIMTAP™ is compatible with all corporation stops™ complying with the AWWA C800 Standard. The SIMTAP™ also works on ball corporation stops and most other valve types. Consult with factory for non-standard valve applications and adapter availability.