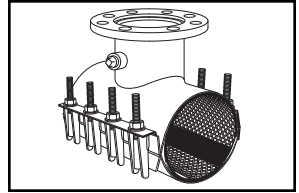


# SUBMITTAL INFORMATION

## Metric Stainless Steel Tapping Sleeve - (FAST-xxxMM style)



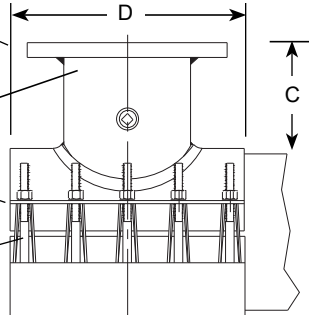
### METRIC STAINLESS STEEL TAPPING SLEEVE - 100MM-300MM

Flange - ASTM A240 Type 304 Stainless Steel Flange Available in PN10 or PN16. Optional Carbon Flange.

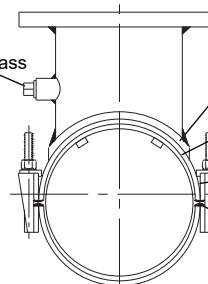
Outlet Pipe - Schedule 5. ASTM A240 Type 304 Stainless Steel Except 100mm is Schedule 10

Lifter Bar - ASTM A240 Type 304 stainless steel provides a heavy bearing surface for nuts.

Studs, nuts, & washers - ASTM A240 Type 304 stainless steel. Nuts and washers are fluorocarbon coated to prevent galling.



3/4-14 No-Lead Brass Test Plug



Full gasket-gridded virgin SBR or NBR (Buna-N) compounded for water service, per ASTM D2000. Full gasket gives 360° pipe coverage.

Outlet gasket - virgin NBR (Buna-N) compound for water service, per ASTM D2000, outlet gasket assures complete seal of outlet area.

Body & Strap — ASTM A240 Type 304 stainless steel all welds are fully passivated to restore stainless characteristics.

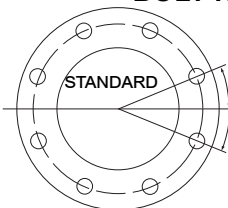
Armors - Heavy gage ASTM A240 Type 304 stainless steel are molded flush into gasket to bridge the gap between lugs.

NOM. PIPE SIZE	PIPE OD RANGE "INCH"	PIPE OD RANGE "MM"	FLANGE SIZE	APPROX. Wt. (LB)	DIM. - "MM"		SADDLE/STRAP THICKNESS MM (GAGE)	STUD SIZE	No. OF STUDS	CATALOG NUMBER**	✓ SUBMITTED ITEM(S)
					C	D					
100mm	4.50-4.80	115-122	80mm	24	131	381	1.9 (14) / 1.25 (18)	5/8	8	FAST-122MM-80-16	
			100mm	25	132	381	2.76 (14) / 1.25 (18)	5/8	8	FAST-122MM-100-16	
150mm	6.60-7.00	168-178	80mm	27	132	381	1.9 (14) / 1.25 (18)	5/8	8	FAST-178MM-80-16	
			100mm	28	132	381	2.76 (12) / 1.25 (18)	5/8	8	FAST-178MM-100-16	
			150mm	36	140	381	2.76 (12) / 1.25 (18)	5/8	8	FAST-178MM-150-16	
200mm	8.66-9.14	220-232	80mm	31	132	381	1.9 (14) / 1.25 (18)	5/8	8	FAST-232MM-80-16	
			100mm	32	132	381	2.76 (12) / 1.25 (18)	5/8	8	FAST-232MM-100-16	
			150mm	40	140	381	2.76 (12) / 1.25 (18)	5/8	8	FAST-232MM-150-16	
			200mm	58	143	510	2.76 (12) / 1.25 (18)	5/8	12	FAST-232MM-200-xx	
250mm	10.79-11.26	274-286	80mm	45	132	381	1.9 (14) / 1.25 (18)	5/8	8	FAST-286MM-80-16	
			100mm	46	132	381	2.76 (12) / 1.25 (18)	5/8	8	FAST-286MM-100-16	
			150mm	50	140	381	2.76 (12) / 1.25 (18)	5/8	8	FAST-286MM-150-16	
			200mm	72	143	510	2.76 (12) / 1.25 (18)	5/8	12	FAST-286MM-200-xx	
			250mm	74	156	510	2.76 (12) / 1.5 (16)	5/8	12	FAST-286MM-250-xx	
300mm	12.75-13.20	324-335	80mm	48	132	381	1.9 (14) / 1.25 (18)	5/8	8	FAST-335MM-80-16	
			100mm	49	132	381	2.76 (12) / 1.25 (18)	5/8	8	FAST-335MM-100-16	
			150mm	53	140	381	2.76 (12) / 1.25 (18)	5/8	8	FAST-335MM-150-16	
			200mm	72	143	510	2.76 (12) / 1.25 (18)	5/8	12	FAST-335MM-200-xx	
			250mm	77	156	510	2.76 (12) / 1.5 (16)	5/8	12	FAST-335MM-250-xx	
	13.40-13.80	340-351	80mm	50	132	381	1.9 (14) / 1.25 (18)	5/8	8	FAST-351MM-80-16	
			100mm	51	132	381	2.76 (12) / 1.25 (18)	5/8	8	FAST-351MM-100-16	
			150mm	55	140	381	2.76 (12) / 1.25 (18)	5/8	8	FAST-351MM-150-16	
			200mm	74	143	510	2.76 (12) / 1.25 (18)	5/8	12	FAST-351MM-200-xx	
			250mm	79	156	510	2.76 (12) / 1.5 (16)	5/8	12	FAST-351MM-250-xx	
			300mm	112	159	610	2.76 (12) / 1.5 (16)	5/8	14	FAST-351MM-300-xx	

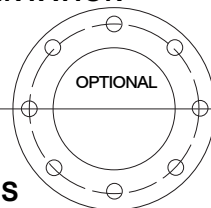
\*\*To order, add either 10 or 16 flange to catalog number. Example: the complete FAST catalog number for a 326mm pipe with a 300mm PN10 flange would be FAST-335M-300-10. For a carbon steel flange, add "A" to the catalog number. Example FAST-335M-300-10A. For optional bolt hole orientation add a "-2" to the catalog number. Example: FAST-335M-10A-2

### BOLT HOLE ORIENTATION

**Standard:** Bolt holes rotated equally off the center line of unit.



UNIT CENTER LINE



**Optional:** Bolt holes aligned with center line of unit. Add "-2" to end of catalog number.

### FEATURES

Body, straps and UNC threaded bolts are made of stainless steel. Flange can be either stainless steel or carbon steel. All welds are for corrosion resistance.

The Ford Meter Box Company considers the information in this submittal form to be correct at the time of publication. Item and option availability, including specifications, are subject to change without notice. Please verify that your product information is current.



**The Ford Meter Box Company, Inc.**  
 P.O. Box 443, Wabash, Indiana U.S.A. 46992-0443  
 Phone: 260-563-3171 / Fax: 800-826-3487  
 Overseas Fax: 260-563-0167  
 www.fordmeterbox.com

08/14/17

Submitted By: