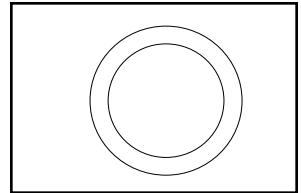


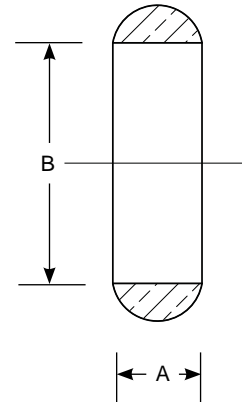
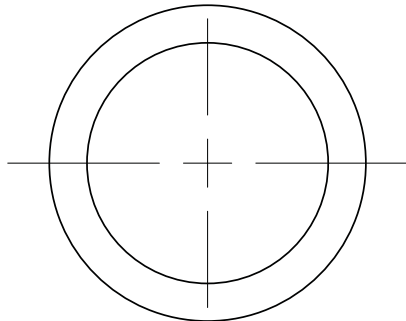
# SUBMITTAL INFORMATION

## Wedding Ring - (WR-x-NL style)



PACK JOINT OR GRIP JOINT TO FLARE FOR CORPORATION STOPS

CONVERTS CTS PACK JOINT OR GRIP JOINT SOCKET TO FLARE COPPER NOSE



DESCRIPTION		THICKNESS (A)	I.D. (B)	APPROX. WT. LBS	PART NUMBER	✓ SUBMITTED ITEM(S)
FOR CTS PJ OR GJ SLEEVE SIZE AND TYPE	SIZE & COUPLING APPLICATION					
3/4" CTS Corporation Stop	3/4"	13/32"	3/4"	0.1	WR-3-NL	
1" CTS Corporation Stop	1"	3/8"	1"	0.1	WR-4-NL	
1-1/4" CTS Corporation Stop	1-1/4"	7/16"	1-1/4"	0.1	WR-5-NL	
1-1/2" CTS Corporation Stop	1-1/2"	13/32"	1-1/2"	0.2	WR-6-NL	
2" CTS Corporation Stop	2"	1/2"	2"	0.3	WR-7-NL	

### FEATURES

- All brass that comes in contact with potable water conforms to AWWA Standard C800 (UNS NO C89833)
- The product has the letters "NL" cast into the main body for proper identification
- Brass components that do not come in contact with potable water conform to AWWA Standard C800 (ASTM B-62 and ASTM B-584, UNS NO C83600 - 85-5-5-5)
- Converts CTS pack joint or grip joint socket to flare copper nose for corporation stops

The Ford Meter Box Company considers the information in this submittal form to be correct at the time of publication. Item and option availability, including specifications, are subject to change without notice. Please verify that your product information is current.



**The Ford Meter Box Company, Inc.**

P.O. Box 443, Wabash, Indiana U.S.A. 46992-0443

Phone: 260-563-3171 / Fax: 800-826-3487

Overseas Fax: 260-563-0167

<http://www.fordmeterbox.com>

11/25/13

Submitted By: